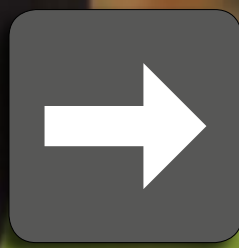




SCHOOLWEAR





WELCOME
TO THE CKL SCHOOLWEAR
CATALOGUE

CHANCES ARE YOUR STRONGEST MEMORIES AREN'T ABOUT THE STITCHING OR THE FABRIC BUT ABOUT HOW THAT UNIFORM MADE YOU FEEL.

School days are a formative period in a young person's life. A good uniform can help children hold their heads high, while a low-quality, ill-fitting one can damage their confidence and happiness at the most sensitive time. Although we ship to more than 1000 schoolwear retailers per year throughout the UK, Europe and even Africa, we are at heart, a family business with family values at the core of everything we do. So when it comes to school clothing, we strongly believe that we owe it to our kids to get it right.

That's why for CKL the perfect uniform is more than the sum of its parts. It's not just about high quality fabrics, neat workmanship or durable quality. It's also about giving young people a sense of belonging, instilling in them a sense of real pride and boosting their self-esteem through comfort and a smart appearance.

WHY USE CKL?

Established for over 45 years

CKL has been successfully supplying garments to the schoolwear industry since 1972.

High Quality + Low Price = Great Value

CKL uses better quality yarns and higher specification fabrics. Our vertically integrated, efficiency led processes, coupled with our low trade margins mean that our prices represent unprecedented value in the UK market.

Multi-Brand Range

We offer one of the largest multi-brand selections in the UK with big name brands – Fruit of the Loom, Russell etc – as well as EXCLUSIVE industry-leading hi-spec brands – TopSport, NOMA, Venom Sports and more – all available under one roof.

Bespoke Service

Buy directly from one of the UK's largest schoolwear suppliers, and access the full savings of our Reseller Services. Our customers already know the incredible value we offer for our quality uniforms. Choose from large selection of fabrics and styles for your bespoke requirements.

Low Trade Price

Our standard trade prices are already among the lowest in the UK.

TO ORDER,
SIMPLY CONTACT US

 **0800 788 0777**

 **sales@ckl.uk.com**

DISCOUNTS

Benefit further with Volume as well as Pre-Book discounts for orders placed 4 months in advance of delivery.

BEST SELLERS

Premium Wool-mix Knitted V-neck Jumper page 10

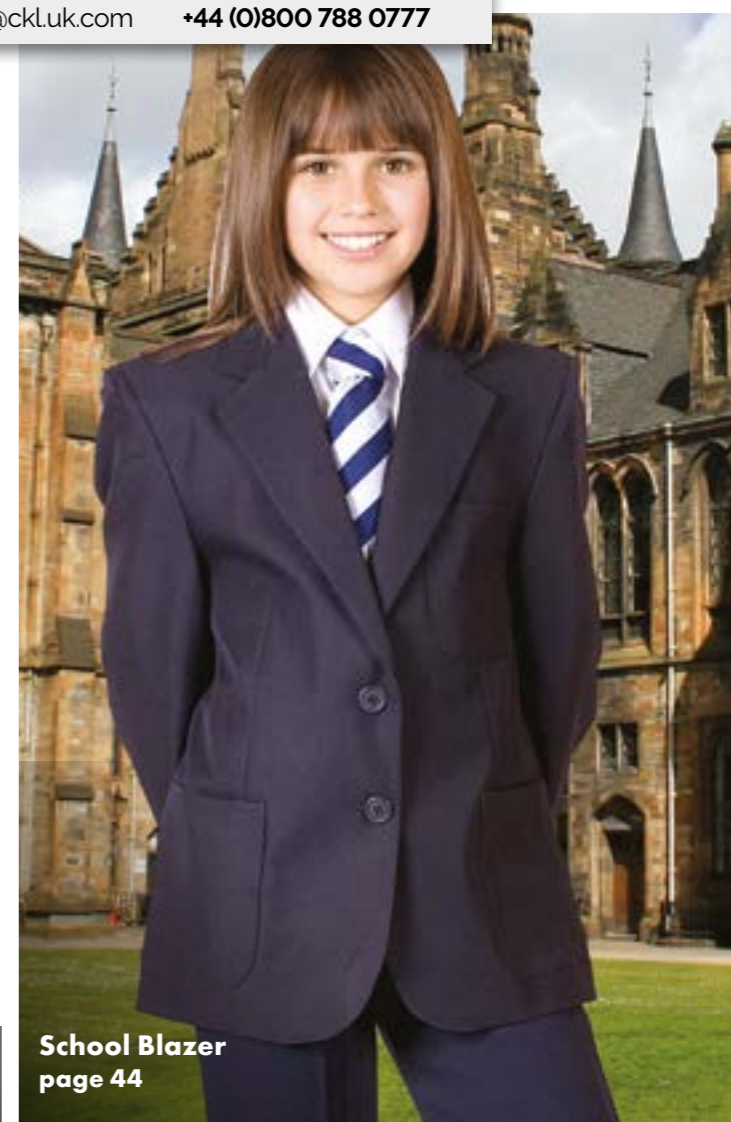


Hi Spec Premium PC Polo page 51



Football Contrast Top & Bottoms page 100

Reversible Waterproof Jacket page 81



School Blazer page 44



Premium Hi-Spec Set-In Crew Sweatshirt page 62

EMBROIDERED



OR

PRINTED



WITH YOUR LOGO

Our In-House **embroidery & printing** team can personalise garments to suit your needs, ensuring the upmost quality from start to finish

CONTENTS

TRADITIONAL SCHOOLWEAR



BOYS

| | |
|----------------|----|
| Shirts | 8 |
| Knitwear | 10 |
| Trousers | 12 |
| Shorts | 17 |
| Blazers | 18 |

GIRLS

| | |
|---------------------------|----|
| Blouses | 20 |
| Knitwear | 23 |
| Skirts | 28 |
| Shorts | 34 |
| Trousers | 36 |
| Pinafores / Dresses | 40 |
| Blazers | 44 |

| | |
|---------------|----|
| BESPOKE | 46 |
|---------------|----|

LEISUREWEAR



| | |
|-------------------|----|
| Polo Shirts | 51 |
| T Shirts | 56 |
| Sweatshirts | 61 |
| Onesies | 73 |
| Jogpants | 74 |



OUTDOORWEAR

| | |
|-------------------|----|
| Fleeces | 77 |
| Jackets | 80 |
| Waterproofs | 85 |
| Camouflage | 88 |
| Hi Vis | 90 |

SPORTSWEAR

| | |
|----------------------------|-----|
| Sports T-Shirts | 93 |
| Shorts | 95 |
| Leggings | 97 |
| Leotards / Crop Tops | 98 |
| Football Kits | 100 |
| Track Suits | 104 |
| Bibs & Socks | 105 |



ACCESSORIES

| | |
|------------------------------|-----|
| Bags | 107 |
| Hats | 114 |
| Socks | 116 |
| Gloves / Shoes / Belts | 119 |



TRADITIONAL

BOYS



Shirts 8



Knitwear 10



Trousers 12



Shorts 17



Blazers 18



Bespoke 46



GIRLS



Blouses 20



Knitwear 23



Skirts 28



Shorts 34



Trousers 36



Dresses & Pinafores 40



Blazers 44



Bespoke 46



WATER TEST:
PASSED



SAUCE TEST:
PASSED



COFFEE TEST:
PASSED



TEA TEST:
PASSED

CKL BOYS SCHOOL SHIRTS
WITH TEFLON & NON-IRON COATING FOR ULTIMATE PROTECTION AGAINST SPILLS, DIRT, STAINS & CREASES.



nano·TECH
Fibre Coating



Boys Shirts Short Sleeves Teflon Coated

Style no: **CSHB12** (Kids)
Style no: **NSHA02** (Adults)

- Fused collar and cuffs
- Non Iron easy care fabric
- Teflon coated for stain resistance and water repellence
- Twin pack in a poly bag with hanger
- One spare button



*Green is available from 11.5" to 14" only

Fabric: 65% Polyester / 35% Cotton
Weight: 120 gsm

| | | | | | | | | | | | | |
|----------------|-------|-----|-------|-----|-------|-----|-------|-----|-------|-----|-------|-----|
| Kids' collar | 11.5" | 12" | 12.5" | 13" | 13.5" | 14" | 14.5" | 15" | 15.5" | 16" | 16.5" | |
| Adults' collar | 14.5" | 15" | 15.5" | 16" | 16.5" | 17" | 17.5" | 18" | 18.5" | 19" | 19.5" | 20" |



Boys Shirts Long Sleeves Teflon Coated

Style no: **CSHB11** (Kids)
Style no: **NSHA01** (Adults)

- Fused collar and cuffs
- Non Iron easy care fabric
- Teflon coated for stain resistance and water repellence
- Twin pack in a poly bag with hanger
- One spare button



Fabric: 65% Polyester / 35% Cotton
Weight: 120 gsm

| | | | | | | | | | | | | |
|----------------|-------|-----|-------|-----|-------|-----|-------|-----|-------|-----|-------|-----|
| Kids' collar | 11.5" | 12" | 12.5" | 13" | 13.5" | 14" | 14.5" | 15" | 15.5" | 16" | 16.5" | |
| Adults' collar | 14.5" | 15" | 15.5" | 16" | 16.5" | 17" | 17.5" | 18" | 18.5" | 19" | 19.5" | 20" |



Short Sleeve School Shirt

Quality SCHOOL WEAR
Style no: **CSHB05** (Kids)
Style no: **WSHA08** (Adults)

- Easy-iron fabric
- Generous fit for comfort and play
- Left breast pocket
- 2 piece fused collar & cuffs for comfort
- Retail single pack in poly-bag
- One spare button

Fabric: 65% Polyester / 35% Cotton
Weight: 104 gsm

| | | | | | | | | | | | | | | |
|----------------|-------|-------|-------|-------|-------|-------|-------|-------|-------|-------|-------|-------|-----|-----|
| Kids' collar | 11" | 11.5" | 12" | 12.5" | 13" | 13.5" | 14" | 14.5" | 15" | 15.5" | 16" | 16.5" | | |
| Adults' collar | 14.5" | 15" | 15.5" | 16" | 16.5" | 17" | 17.5" | 18" | 18.5" | 19" | 19.5" | 20" | 21" | 22" |

CLEARANCE



Short Sleeve School Shirt

Style no: **CSHB02** (Kids)
Style no: **WSHA02** (Adults)

- Easy-iron premium-weight fabric
- Generous fit for comfort and play
- Left breast pocket
- 2 piece fused collar & cuffs for comfort
- Retail twin pack in poly-bag with hanger
- 2 spare buttons

Fabric: 65% Polyester / 35% Cotton
Weight: 110 gsm

| | | | | | | | | | | | | |
|----------------|-------|-------|-------|-------|-------|-------|-------|-------|-------|-------|-------|-------|
| Kids' collar | 11" | 11.5" | 12" | 12.5" | 13" | 13.5" | 14" | 14.5" | 15" | 15.5" | 16" | 16.5" |
| Adults' collar | 14.5" | 15" | 15.5" | 16" | 16.5" | 17" | 17.5" | 18" | 18.5" | 19" | 19.5" | 20" |



Long Sleeve School Shirt

Quality SCHOOL WEAR
Style no: **CSHB04** (Kids)
Style no: **WSHA07** (Adults)

- Easy-iron fabric
- Generous fit for comfort and play
- Left breast pocket
- 2 piece fused collar & cuffs for comfort
- Retail single pack in poly-bag
- One spare button

Fabric: 65% Polyester / 35% Cotton
Weight: 104 gsm

| | | | | | | | | | | | | | | |
|----------------|-------|-------|-------|-------|-------|-------|-------|-------|-------|-------|-------|-------|-----|-----|
| Kids' collar | 11" | 11.5" | 12" | 12.5" | 13" | 13.5" | 14" | 14.5" | 15" | 15.5" | 16" | 16.5" | | |
| Adults' collar | 14.5" | 15" | 15.5" | 16" | 16.5" | 17" | 17.5" | 18" | 18.5" | 19" | 19.5" | 20" | 21" | 22" |

CLEARANCE



Long Sleeve School Shirt

Style no: **CSHB01** (Kids)
Style no: **WSHA01** (Adults)

- Easy-iron premium-weight fabric
- Generous fit for comfort and play
- Left breast pocket
- 2 piece fused collar & cuffs for comfort
- Retail twin pack in poly-bag with hanger
- 2 spare buttons

Fabric: 65% Polyester / 35% Cotton
Weight: 110 gsm

| | | | | | | | | | | | | |
|----------------|-------|-------|-------|-------|-------|-------|-------|-------|-------|-------|-------|-------|
| Kids' collar | 11" | 11.5" | 12" | 12.5" | 13" | 13.5" | 14" | 14.5" | 15" | 15.5" | 16" | 16.5" |
| Adults' collar | 14.5" | 15" | 15.5" | 16" | 16.5" | 17" | 17.5" | 18" | 18.5" | 19" | 19.5" | 20" |



Cotton Mix V-Neck Knitted Jumper



Style no: **CJUK05** (Kids)
Style no: **WJUA05** (Adults)

- 12 gauge fine single-knit jersey fabric soft handle
- Linked neck and arm hole
- Fully fashioned
- Raglan sleeves

Kids:



Adults:



Fabric: 50% Acrylic / 50% Cotton

| | | | | | | |
|------------|-----|-----|-----|------|-------|-----|
| Chest size | 24" | 26" | 28" | 30" | 32" | 34" |
| To Fit Age | 3/4 | 5/6 | 7/8 | 9/10 | 11/12 | 13 |

| | | | | | |
|--------|---|---|---|----|-----|
| Adults | S | M | L | XL | 2XL |
|--------|---|---|---|----|-----|



Premium Wool-mix Knitted V-neck Jumper



Style no: **CJUK01** (Kids)
Style no: **WJUA01** (Adults)

- Luxurious fine 12 gauge 1x1 rib tight-knit soft-finish wool-mix
- Raglan sleeves
- Linked collar
- Elastane in bottom border and cuffs for better shape retention

Kids:



Adults:



Fabric: 80% Acrylic / 20% Wool, Part Elastane

| | | | | | | |
|--------------|-----|-----|-----|------|-------|-----|
| Chest to fit | 24" | 26" | 28" | 30" | 32" | 34" |
| To Fit Age | 3/4 | 5/6 | 7/8 | 9/10 | 11/12 | 13 |

| | | | | | |
|--------|---|---|---|----|-----|
| Adults | S | M | L | XL | 2XL |
|--------|---|---|---|----|-----|



Sleeveless V-Neck Wool-mix Slipover



Style no: **CJUK02** (Kids)
Style no: **WJUA02** (Adults)

- Luxurious fine 12 gauge 1x1 rib tight-knit soft-finish wool-mix fabric
- Linked collar and arm bands
- Elastane in bottom border for better shape retention

Kids:



Adults:



Fabric: 80% Acrylic / 20% Wool, Part Elastane

| | | | | | | |
|--------------|-----|-----|-----|------|-------|-----|
| Chest to fit | 24" | 26" | 28" | 30" | 32" | 34" |
| To Fit Age | 3/4 | 5/6 | 7/8 | 9/10 | 11/12 | 13 |

| | | | | | |
|--------|---|---|---|----|-----|
| Adults | S | M | L | XL | 2XL |
|--------|---|---|---|----|-----|



Sleeveless V-Neck Cotton-mix Slipover



Style no: **CJUK02C** (Kids)
Style no: **WJUA02C** (Adults)

- 12 gauge fine single-knit jersey fabric soft handle
- Linked neck and arm hole
- Elastane in bottom border for better shape retention

Kids:



Fabric: 50% Acrylic / 50% Cotton

| | | | | | | |
|------------|-----|-----|-----|------|-------|-----|
| Chest size | 24" | 26" | 28" | 30" | 32" | 34" |
| To Fit Age | 3/4 | 5/6 | 7/8 | 9/10 | 11/12 | 13 |

| | | | | | |
|--------|---|---|---|----|-----|
| Adults | S | M | L | XL | XXL |
|--------|---|---|---|----|-----|

Adults:



CLEARANCE



Wool Mix Knitted Cardigan



Style no: **CCAK02** (Kids)
Style no: **CCAA02** (Adults)

- Luxurious fine 12 gauge single jersey tight-knit soft-finish wool-mix fabric
- Linked strap with five buttons
- Fully fashioned raglan sleeves
- Elastane in bottom border and cuffs for better shape

black

Fabric: 80% Acrylic / 20% Wool, Part Elastane

| | | | | | | |
|--------------|-----|-----|-----|------|-------|-----|
| Chest to fit | 24" | 26" | 28" | 30" | 32" | 34" |
| To Fit Age | 3/4 | 5/6 | 7/8 | 9/10 | 11/12 | 13 |

| | | | | |
|--------|---|---|---|----|
| Adults | S | M | L | XL |
|--------|---|---|---|----|



Youths Slim Fit Trousers



Style no: **CTRB25** (Kids)
Style no: **WTRA25** (Adults)

- Full waist with internal elastic adjustable waist band
- Zip front
- Hook and bar fastening
- Lined waist band
- 2 side pockets and one back pocket
- Flat front
- 5 belt loops
- Bar tack on key stress points
- Hanger packed

black

Fabric: 65% Polyester / 35% Viscose (Teflon Coated)

| | | | | | | | |
|-------------|-----|-----|-----|-----|-----|-----|-----|
| Kids' waist | 23" | 24" | 25" | 26" | 27" | 28" | 29" |
|-------------|-----|-----|-----|-----|-----|-----|-----|

| | | | | | | |
|---------------|-----|-----|-----|-----|-----|-----|
| Adults' waist | 28" | 30" | 32" | 34" | 36" | 38" |
|---------------|-----|-----|-----|-----|-----|-----|

3 leg lengths Short (29"); Regular (31"); Long (33")

Boys Slim Fit Trousers



Style no: **CTRB24**

- Half elastic adjustable waist band
- Zip front with hook and bar fastening
- Lined waist band
- Two side pockets
- Flat front
- 5 belt loops
- Bar tack on key stress points
- Hanger packed

grey black navy brown

Fabric: 65% Polyester / 35% Viscose (Teflon Coated)

| | | | | | | | | | | |
|------------|-----|-----|-----|-----|-----|-----|------|-------|-------|----|
| To Fit Age | 3/4 | 4/5 | 5/6 | 6/7 | 7/8 | 8/9 | 9/10 | 10/11 | 11/12 | 13 |
|------------|-----|-----|-----|-----|-----|-----|------|-------|-------|----|

Full-Waist Pleated Trousers - Secondary



Style no: **CTRB08** (Kids)
Style no: **WTRA05** (Adults)

- Full waist
- Pleated front with belt
- Teflon coated
- Water repellent & stain resistant
- 2 side pockets
- 1 back pocket
- Hanger packed

black

Fabric: 65% Polyester / 35% Viscose (Teflon Coated)
Weight: 280 gsm

| | | | | | | | |
|-------------|-----|-----|-----|-----|-----|-----|-----|
| Kids' waist | 24" | 25" | 26" | 27" | 28" | 29" | 30" |
| Inside leg | 24" | 25" | 26" | 27" | 28" | 29" | 30" |

| | | | | | | | | | | | |
|---------------|--|-----|-----|-----|-----|-----|-----|-----|-----|-----|-----|
| Adults' waist | 30" | 32" | 34" | 36" | 38" | 40" | 42" | 44" | 46" | 48" | 50" |
| 3 leg lengths | Short (29"); Regular (31"); Long (33") | | | | | | | | | | |

Full Waist Elastic Adjuster Trousers



Style no: **CTRB23** (Kids)
Style no: **WTRA23** (Adults)

- Full waist band with lining and with internal button elastic adjuster
- Two side pockets
- Back pocket with button and one phone pocket
- Extended waist band with hook and bar fastening
- Zip front fly
- Flat front
- Black fabric pocket pouches with black binding
- Teflon coated, water repellent and Stain resistant
- Woven taped on the back of the bottom hem
- Hanger packed

black

Fabric: 65% Polyester / 35% Viscose (Teflon Coated)

| | | | | | | | |
|-------------|-----|-----|-----|-----|-----|-----|-----|
| Kids' waist | 24" | 25" | 26" | 27" | 28" | 29" | 30" |
| Inside leg | 24" | 25" | 26" | 27" | 28" | 29" | 30" |

| | | | | | | | |
|---------------|--|-----|-----|-----|-----|-----|-----|
| Adults' waist | 30" | 32" | 34" | 36" | 38" | 40" | 42" |
| 3 leg lengths | Short (29"); Regular (31"); Long (33") | | | | | | |

CLEARANCE



Full-Waist Zip Pockets Trousers - Secondary

Style no: CTRB09



- Full waist band
- Pleated front with belt and 3 zip pockets
- Teflon coated
- Water repellent and stain resistant
- Zip front fly
- Hook and bar fastening on waistband
- Hanger packed



Fabric: 65% Polyester / 35% Viscose (Teflon Coated)
Weight: 280 gsm

| | | | | | | |
|-------------|-----|-----|-----|-----|-----|-----|
| Kids' waist | 24" | 25" | 26" | 27" | 28" | 29" |
| Inside leg | 24" | 25" | 26" | 27" | 28" | 29" |

CLEARANCE



Jeans-Style Stretch Trousers - Secondary

nico dolce

Style no: CTRB13 (Kids)
Style no: WTRA13 (Adults)

- Stretch fabric
- Very comfortable to wear
- Modern jean style
- 2 jean style front pockets
- 1 coin pocket
- 2 back patch pockets
- Zip-front fly
- Button fastened waistband



Fabric: 60% Polyester / 35% Viscose / 5% Elastane
Weight: 300 gsm

| | | | | | | | |
|-------------|-----|-----|-----|-----|-----|-----|-----|
| Kids' waist | 24" | 25" | 26" | 27" | 28" | 29" | 30" |
| Inside leg | 24" | 25" | 26" | 27" | 28" | 29" | 30" |

| | | | | | | | |
|---------------|--|-----|-----|-----|-----|-----|-----|
| Adults' waist | 28" | 30" | 32" | 34" | 36" | 38" | 40" |
| 3 leg lengths | Short (29"); Regular (31"); Long (33") | | | | | | |



Zip Front Trousers (Elastic Waist Adjuster)

Style no: CTRB21



- Elasticated back with internal 2 button elastic adjuster
- Zip front with hook and bar fastening
- Lining on the inside of front waistband
- Two side pockets
- Flat front
- Black fabric pocket pouches with black binding
- Teflon coated
- Water repellent
- Stain resistant
- Hanger packed



Fabric: 65% Polyester / 35% Viscose (Teflon Coated)

| | | | | | | | | | | | |
|--|-----|-----|-----|-----|-----|------|-------|-------|----|--------|---------|
| To Fit Age | 4/5 | 5/6 | 6/7 | 7/8 | 8/9 | 9/10 | 10/11 | 11/12 | 13 | *14/15 | **15/16 |
| * Years 14/15 & 15/16 only in Black & Brown; ** Years 14/15 & 15/16 are subject to VAT | | | | | | | | | | | |



1/2 Elastic Waist Zip Front Trousers

Style no: CTRB22



- Traditional 1/2 elasticated back
- Zip front with hook and bar fastening
- Lining on the inside of front waistband
- Two side pockets
- Flat front
- Black fabric pocket pouches with black binding
- Teflon coated
- Water repellent and stain resistant
- Hanger packed



Fabric: 65% Polyester / 35% Viscose (Teflon Coated)

| | | | | | | | | | |
|------------|-----|-----|-----|-----|-----|------|-------|-------|----|
| To Fit Age | 4/5 | 5/6 | 6/7 | 7/8 | 8/9 | 9/10 | 10/11 | 11/12 | 13 |
|------------|-----|-----|-----|-----|-----|------|-------|-------|----|



Essential Pull-on Trousers - Primary



Style no: **CTRB11**

- Teflon coated (water repellent and stain resistant)
- ½ elasticated waist
- Pull-on style
- Flat-front without zip fly
- 2 side pockets
- Navy colour - made to Order



Fabric: 65% Polyester / 35% Viscose (Teflon Coated)
Weight: 280 gsm

| | | | | | | |
|------------|-----|-----|-----|-----|-----|-----|
| Length: | 20" | 22" | 24" | 26" | 28" | 30" |
| To Fit Age | 2/3 | 3/4 | 4/5 | 5/6 | 6/7 | 7/8 |

Pull-on Trousers (elastic waist adjuster)



Style no: **CTRB20**

- Teflon coated (water repellent and stain resistant)
- Elasticated back with internal 2 button elastic adjuster
- Lining on the inside of front waistband
- Mock fly
- Two side pockets
- Flat front
- Black fabric pocket pouches with black binding
- Hanger packed



Fabric: 65% Polyester / 35% Viscose (Teflon Coated)

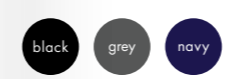
| | | | | | | |
|------------|-----|-----|-----|-----|-----|-----|
| To Fit Age | 2/3 | 3/4 | 4/5 | 5/6 | 6/7 | 7/8 |
|------------|-----|-----|-----|-----|-----|-----|

'Sturdy Fit' Pull-on Trousers - Primary



Style no: **CTRB10**

- Teflon coated (water repellent and stain resistant)
- ½ elasticated waist
- Generous sizing on waist and thighs for sturdy fit boys
- 2 side pockets
- Zip front fly
- Hook and bar fastening on waistband
- Single pleat front
- Navy colour - made to Order
- Hanger packed



Fabric: 65% Polyester / 35% Viscose (Teflon Coated)
Weight: 280 gsm

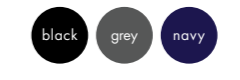
| | | | | | | | |
|--|---|---|---|----|-----|-----|-----|
| Kids size | S | M | L | XL | 2XL | 3XL | 4XL |
| * Youth sizes 3XL & 4XL are subject to VAT | | | | | | | |

Boys Shorts



Style no: **CSTB01**

- Teflon coated (water repellent and stain resistant)
- Single pleat - front with zip fly
- 2 side pockets
- Navy colour - made to Order



Fabric: 65% Polyester / 35% Viscose (Teflon Coated)
Weight: 280 gsm

| | | | | | | | | | | |
|------------|-----|-----|-----|-----|-----|-----|------|-------|-------|-------|
| To Fit Age | 3/4 | 4/5 | 5/6 | 6/7 | 7/8 | 8/9 | 9/10 | 10/11 | 11/12 | 12/13 |
|------------|-----|-----|-----|-----|-----|-----|------|-------|-------|-------|



CLEARANCE



Boys School Blazer



Style no: **CBZB01N**

- NEW IMPROVED FABRIC - Heavier & more matt finished 100% polyester (machine washable)
- Teflon coated (water repellent and stain resistant)
- Sew-on pocket patch for badge embroidery
- 3 outer pockets and 2 internal pockets
- 2 self coloured buttons (2 spare buttons)
- Zip access for embroidery
- Hanging loop and name tag
- Retail hanger packed



*Royal available up to 30" only

Fabric: 100% Polyester (Teflon Coated)
Weight: 280 gsm

| Size | 0 | 1 | 2 | 3 | 4 | 5 | 6 | 7 | 8 | 9 | 10 | 11 | 12 | 14 | 16 | 18 | 20 | 22 | 24 | 26 |
|-------------------|-----|-----|-----|-----|-----|-----|-----|-----|------|-------|-------|-------|-----|-----|-----|-----|-----|-----|-----|-----|
| To fit chest | 22" | 23" | 24" | 25" | 26" | 27" | 28" | 29" | 30" | 31" | 32" | 33" | 34" | 36" | 38" | 40" | 42" | 44" | 46" | 48" |
| Age (approximate) | 1/2 | 2/3 | 3/4 | 4/5 | 5/6 | 6/7 | 7/8 | 8/9 | 9/10 | 10/11 | 11/12 | 12/13 | 13 | 14 | 15 | 16+ | | | | |

CLEARANCE Boys School Blazer



Style no: **CBZB01** (Zip access for embroidery)
Style no: **CBZB02** (NO zip access for embroidery)

- Teflon coated (water repellent and stain resistant)
- Heavy 100% polyester (machine washable)
- Sew-on pocket patch for badge embroidery
- 3 outer pockets and 2 internal pockets
- 2 self coloured buttons (2 spare buttons)
- Hanging loop and name tag
- Retail hanger packed



Fabric: 100% Polyester (Teflon Coated)



Boys Tailored Fit Blazer



Style no: **CBZB05**

- NEW IMPROVED FABRIC - Heavier & more matt finished 100% polyester (machine washable)
- Teflon coated (water repellent and stain resistant)
- Sew-on pocket patch for badge embroidery
- 3 outer pockets and 2 internal pockets
- 2 self coloured buttons (2 spare buttons)
- Zip access for embroidery
- Shaped at sides for slimmer fit
- Hanging loop and name tag
- Retail hanger packed



Fabric: 100% Polyester (Teflon Coated)
Weight: 280 gsm

| Size | 6 | 8 | 10 | 12 | 14 | 16 | 18 |
|-------------------|-----|------|-------|-----|-----|-----|-----|
| To fit chest | 28" | 30" | 32" | 34" | 36" | 38" | 40" |
| Age (approximate) | 7/8 | 9/10 | 11/12 | 13 | 14 | 15 | 16+ |



Italian 'Enduro' Wool



CLEARANCE

BOYS Wool Blend BLAZER



Style no: **CBZB10**

- Luxurious Italian wool (80% wool / 20% polyamide)
- 100 % Polyester Satin Lining
- 3 self coloured buttons (2 spare buttons)
- 20cm x 20cm piece of fabric in the top pocket
- Woven hanger loop
- Lined pockets
- 25cm invisible zip access for embroidery
- Lining / facing 1cm above inside of chest pocket
- Hanger packed with poly bag cover.
- 3 outer pockets and 2 internal pockets

| Kids' Sizes | 10 | 11 | 12 | 13 | 14 | 15 | 16 | 17 | 18 |
|--------------|-------|-------|-----|-------|-----|-------|-----|-------|-----|
| To fit chest | 32" | 33" | 34" | 35" | 36" | 37" | 38" | 39" | 40" |
| Age | 11/12 | 12/13 | 13 | 13/14 | 14 | 14/15 | 15 | 15/16 | 16 |

| Kids' Sizes | 19 | 20 | 21 |
|--------------|-----|-----|-----|
| To fit chest | 41" | 42" | 43" |
| Age | 16+ | | |



WATER TEST: PASSED



SAUCE TEST: PASSED



COFFEE TEST: PASSED



TEA TEST: PASSED

CKL GIRLS SCHOOL BLOUSES

WITH TEFLON & NON-IRON COATING FOR ULTIMATE PROTECTION AGAINST SPILLS, DIRT, STAINS & CREASES.



nano·TECH Fibre Coating



Girls School Blouse L/S Teflon Coated



Style no: **CBLG11** (Girls)
Style no: **NSHL01** (Ladies)

- Teflon Coated & Non-Iron
- Stain & Wrinkle-resistant
- Oil & Water-repellent
- Twin pack in a poly bag with hanger
- Curved sides for a smart fit
- Durable top-stitched seams
- Chest pocket (mitred corners)
- Edge stitched pocket & yoke
- Spare button & Name tag label
- Fused two-piece collar, front placket and mitred cuffs

white



Fabric: 65% Polyester / 35% Cotton Poplin
Weight: 120 gsm

| | | | | | | | | | | | |
|-------------------|--------|--------|--------|--------|--------|--------|--------|--------|---------|---------|---------|
| To Fit Chest Size | 24" | 26" | 28" | 30" | 32" | 34" | 36" | 38" | 40" | 42" | 44" |
| | (61cm) | (66cm) | (71cm) | (76cm) | (81cm) | (86cm) | (91cm) | (96cm) | (102cm) | (107cm) | (112cm) |
| Approx Age | 3/4 | 5/6 | 7/8 | 9/10 | 11/12 | 13 | 14 | 15 | 16 | 16+ | |
| Ladies size | 8 | 10 | 12 | 14 | 16 | 18 | 20 | | | | |

Girls School Blouse S/S Teflon Coated



Style no: **CBLG12** (Girls)
Style no: **NSHL02** (Ladies)

- Teflon Coated & Non-Iron
- Stain & Wrinkle-resistant
- Oil & Water-repellent
- Twin pack in a poly bag with hanger
- Curved sides for a smart fit
- Durable top-stitched seams
- Chest pocket (mitred corners)
- Edge stitched pocket & yoke
- Spare button & Name tag label
- Fused two-piece collar, front placket and mitred cuffs

white



Fabric: 65% Polyester / 35% Cotton Poplin
Weight: 120 gsm

| | | | | | | | | | | | |
|-------------------|--------|--------|--------|--------|--------|--------|--------|--------|---------|---------|---------|
| To Fit Chest Size | 24" | 26" | 28" | 30" | 32" | 34" | 36" | 38" | 40" | 42" | 44" |
| | (61cm) | (66cm) | (71cm) | (76cm) | (81cm) | (86cm) | (91cm) | (96cm) | (102cm) | (107cm) | (112cm) |
| Approx Age | 3/4 | 5/6 | 7/8 | 9/10 | 11/12 | 13 | 14 | 15 | 16 | 16+ | |
| Ladies size | 8 | 10 | 12 | 14 | 16 | 18 | 20 | | | | |



Fitted Short Sleeve Blouse



Style no: **CBLG07** (Girls)
Style no: **CBLLO7** (Ladies)

- Button Front
- Lightweight fused collar
- Front and back darts for a better fit
- Twin packs on hangers.
- Easy iron fabric

Kids:



Adults:



Fabric: 65% Polyester / 35% Cotton
Weight: 120 gsm

| | | | | | | |
|-------------------|-----|-----|-----|-----|-----|-----|
| Girls chest size | 24" | 26" | 28" | 30" | 32" | 34" |
| Ladies chest size | 36" | 38" | 40" | | | |



Fitted Cap Sleeve Puff Shoulder Blouse



Style no: **CBLG06T** (Girls)
Style no: **CBLLO6T** (Ladies)

- Teflon coated & non iron finish
- Stain resistant & water repellent
- Button front
- Lightweight fused collar
- Puffed shoulders
- Cap sleeves
- Front and back darts for a better fit

Kids:



Adults:



Fabric: 65% Polyester / 35% Cotton
Weight: 120 gsm

| | | | | | | |
|-------------------|-----|-----|-----|------|-------|-------|
| Chest Size | 24" | 26" | 28" | 30" | 32" | 34" |
| To Fit Age | 3/4 | 5/6 | 7/8 | 9/10 | 11/12 | 13/14 |
| Ladies chest size | 36" | 38" | 40" | 42" | 44" | |



nano·TECH Fibre Coating





Long Sleeve School Blouse

Quality SCHOOL WEAR Style no: **CBLG04**

- Fused collar and cuffs
- Easy care fabric
- Single pack in poly bag
- One spare button

Fabric: 65% Polyester / 35% Cotton (Easy-Care) white sky
Weight: 104 gsm

| Chest to fit | 24" | 26" | 28" | 30" | 32" | 34" | 36" | 38" | 40" | 42" | 44" |
|--------------|-----|-----|-----|------|-------|-------|-----|-----|-----|-----|-----|
| Girls years | 3/4 | 5/6 | 7/8 | 9/10 | 11/12 | 13/14 | 15 | 16 | 16+ | | |



Short Sleeve School Blouse

Quality SCHOOL WEAR Style no: **CBLG05**

- Fused collar and cuffs
- Easy care fabric
- Single pack in poly bag
- One spare button

Fabric: 65% Polyester / 35% Cotton (Easy-Care) white sky
Weight: 104 gsm

| Chest to fit | 24" | 26" | 28" | 30" | 32" | 34" | 36" | 38" | 40" | 42" | 44" |
|--------------|-----|-----|-----|------|-------|-------|-----|-----|-----|-----|-----|
| Girls years | 3/4 | 5/6 | 7/8 | 9/10 | 11/12 | 13/14 | 15 | 16 | 16+ | | |

CLEARANCE



Long or Short Sleeve School Blouse

CKL SCHOOLWEAR Short sleeve style no: **CBLG02**
Long sleeve style no: **CBLG01**

- Fused collar and cuffs
- Easy care fabric
- Twin pack in poly bag with hanger
- Two spare buttons

Fabric: 65% Polyester / 35% Cotton (Easy-Care) white sky
Weight: 110 gsm

| Chest to fit | 24" | 26" | 28" | 30" | 32" | 34" | 36" | 38" | 40" | 42" |
|--------------|-----|-----|-----|------|-------|-------|-----|-----|-----|-----|
| Girls years | 3/4 | 5/6 | 7/8 | 9/10 | 11/12 | 13/14 | 15 | 16 | 16+ | |

CLEARANCE



3/4 Sleeve School Blouse

CKL SCHOOLWEAR Style no: **CBLG03** (Girls)
Style no: **CBLLO3** (Ladies)

- Button front
- Easy care fabric
- 3/4 sleeves with split
- Fitted shape
- Front and back tailoring darts.

Fabric: 65% Polyester / 35% Cotton (Easy-Care)
Weight: 110 gsm

| Chest Size | 26" | 28" | 30" | 32" | 34" | |
|-------------|-----|-----|------|-------|-------|----|
| To Fit Age | 5/6 | 7/8 | 9/10 | 11/12 | 13/14 | |
| Ladies size | 8 | 10 | 12 | 14 | 16 | 18 |



Cotton-Mix Knitted Cardigan

CKL SCHOOLWEAR Style no: **CCAK05** (Girls)
Style no: **CCAL05** (Ladies)

- 12 gauge fine single-knit jersey fabric soft handle
- Fully fashioned
- Raglan sleeves
- Linked button front strap
- Name label

Girls: school grey black royal navy purple red burgundy brown bottle green

Ladies: black

Fabric: 50% Acrylic / 50% Cotton

| Girls chest to fit | 24" | 26" | 28" | 30" | 32" | 34" |
|--------------------|-----|-----|-----|-----|-----|-----|
| Ladies chest sizes | S | M | L | XL | | |



Premium Wool-Mix Knitted Cardigan

CKL SCHOOLWEAR Style no: **CCAK01** (Girls)
Style no: **CCAL01** (Ladies)

- Raglan sleeves
- Linked button front strap
- Elastane in border and cuffs
- 12 gauge tight knit soft finish fabric
- Name label

Girls: school grey black royal navy purple red burgundy brown bottle green

Ladies: school grey black navy

Fabric: 80% Acrylic / 20% Wool Part Elastane

| Chest to fit | 24" | 26" | 28" | 30" | 32" | 34" |
|--------------|-----|-----|-----|------|-------|-----|
| Girls years | 3/4 | 5/6 | 7/8 | 9/10 | 11/12 | 13 |

| Ladies sizes | S | M | L |
|--------------|---|---|---|
|--------------|---|---|---|



U-Neck Slipover



Style no: **CSOG02** (Girls)
Style no: **CSOL02** (Ladies)

- Wool Mix, 12 gauge fine single-knit jersey fabric soft handle
- Linked neck and armband
- High waist rib for snug fit



Fabric: 80% Acrylic / 20% Wool

| | | | | | |
|--------------|-----|-----|------|-------|-----|
| Girls years | 5/6 | 7/8 | 9/10 | 11/12 | 13 |
| Chest to fit | 26" | 28" | 30" | 32" | 34" |

| | | | |
|---------------|---|---|----|
| Ladies' sizes | M | L | XL |
|---------------|---|---|----|

V-Neck Slipover



Style no: **CSOG01** (Girls)
Style no: **CSOL01** (Ladies)

- Wool Mix, 12 gauge fine knit fabric with soft handle
- High waist rib for snug fit
- Linked neck and armband



Fabric: 80% Acrylic / 20% Wool

| | | | | | |
|--------------|-----|-----|------|-------|-----|
| Girls years | 5/6 | 7/8 | 9/10 | 11/12 | 13 |
| Chest to fit | 26" | 28" | 30" | 32" | 34" |

| | | | |
|---------------|---|---|----|
| Ladies' sizes | M | L | XL |
|---------------|---|---|----|

CLEARANCE



Stretch Zip Front Knitted Cardigan



Style no: **CCAG02** (Girls)
Style no: **CCAL02** (Ladies)

- Wool / Elastane mix
- High waist rib for snug fit.
- Elastane throughout the fabric for better shape and fit
- Front zip fastening



Fabric: 75% Acrylic / 20% Wool / 5% Elastane

| | | | | | |
|--------------|-----|-----|------|-------|-----|
| Girls years | 5/6 | 7/8 | 9/10 | 11/12 | 13 |
| Chest to fit | 26" | 28" | 30" | 32" | 34" |

| | | |
|---------------|---|---|
| Ladies' sizes | M | L |
|---------------|---|---|

CLEARANCE



3/4 Sleeve V-neck Jumper



Style no: **CJUG01** (Girls)
Style no: **CJUL01** (Ladies)

- Wool / Elastane mix, 12 gauge fine knit fabric with soft handle
- Linked neck
- Elastane throughout for better shape and fit
- High waist rib for snug fit



Fabric: 75% Acrylic / 20% Wool / 5% Elastane

| | | | | | |
|--------------|-----|-----|------|-------|-----|
| Girls years | 5/6 | 7/8 | 9/10 | 11/12 | 13 |
| Chest to fit | 26" | 28" | 30" | 32" | 34" |

| | | | |
|---------------|---|---|----|
| Ladies' sizes | M | L | XL |
|---------------|---|---|----|



Premium-Weight Sweatshirt Cardigan

Girls Sweatshirt Cardigan



Style no: TCK01



Style no: JCK273 (Girls)
Style no: JCAA273 (Ladies)

- Thick and luxuriously soft-handle cotton-rich fabric
- Elastane-mix rib cuffs, border and full front strap
- Tape-strengthened back-neck shoulder seams
- Double stitched seams (except side seam)
- Two front pockets inset into bottom border seam
- Twill tape covered back neck
- Name label

- Five button front
- Double stitched seams
- Side seam pockets
- Name label



Fabric: 70% Cotton / 30% Polyester
Weight: 300 gsm

Fabric: 50% Combed Ringspun Cotton / 50% Polyester
Weight: 295 gsm

| | | | | | | | |
|--------------|-----|-----|-----|-----|------|-------|-----|
| Girls years | 3/4 | 4/5 | 5/6 | 7/8 | 9/10 | 11/12 | 13 |
| Chest to fit | 24" | 25" | 26" | 28" | 30" | 32" | 34" |

| | | | | | |
|--------------|--------|--------|--------|--------|--------|
| Girls years | 3/4 | 5/6 | 7/8 | 9/10 | 11/12 |
| Chest to fit | 22/25" | 25/28" | 28/30" | 30/32" | 32/34" |

Ladies' sizes XS S M L XL XXL



BESPOKE SERVICES

- BLAZERS
- KNITWEAR
- SKIRTS
- PINAFORES
- TIES



Professionally made bespoke garments according to your precise specifications.

PRINTED or **EMBROIDERED**
We can arrange a full range of quality personalisation for your uniform requirements





CLEARANCE

Stitch-Down Pleat Skirt Without Waist Band

Stitch-Down All Around Pleated Skirt

Hand Pleat Skirt - Secondary

6-Pleat School Skirt - Secondary



Style no: **CSKG136**



Style no: **CSKG138**



Style no: **CSKG113** (Girls)
Style no: **CSKL113** (Ladies)



Style no: **CSKG05** (Girls)
Style no: **CSKL05** (Ladies)

MADE TO ORDER ONLY

- Stitch down pleats all around
- Zip back with button and loop fastening
- No waist band
- Minimum order 60 pieces per colour & 12 pieces per size

- Waist band with one button
- Back zip
- Stitch-down pleats all round

- Drop waist
- Pleats all round
- Back zip opening

- Full waist
- 3 box pleats on front and 3 box pleats on back
- Concealed zip on one side



Fabric: 65% Polyester / 35% Viscose

Fabric: 100% Polyester

Fabric: 58% Polyester / 38% Viscose / 4% Elastane
Weight: 110 gsm

Fabric: 65% Polyester / 35% Viscose

| | | | | | | | |
|-------------|-----|-----|-----|-----|------|------|------|
| Girls waist | 22" | 24" | 26" | 28" | *30" | *32" | *34" |
|-------------|-----|-----|-----|-----|------|------|------|

*Sizes 30"+ are subject to VAT

| | | | | | | | | |
|-------------|-----|-----|-----|-----|------|------|------|------|
| Girls waist | 22" | 24" | 26" | 28" | *30" | *32" | *34" | *36" |
|-------------|-----|-----|-----|-----|------|------|------|------|

*Sizes 30"+ are subject to VAT

| | | | | | | |
|--------------|-----|-----|------|-------|-----|--------|
| Girls years | 5/6 | 7/8 | 9/10 | 11/12 | 13 | *15/16 |
| Waist to fit | 22" | 24" | 26" | 28" | 29" | 30" |

*age 15/16 is subject to VAT

| | | | | | | |
|-------------|-----|-----|-----|------|------|------|
| Girls waist | 24" | 26" | 28" | *30" | *32" | *33" |
|-------------|-----|-----|-----|------|------|------|

*Sizes 30"+ are subject to VAT

| | | | | | | |
|---------------|---|---|----|----|----|----|
| Ladies' sizes | 6 | 8 | 10 | 12 | 14 | 16 |
|---------------|---|---|----|----|----|----|

| | | | | |
|---------------|----|----|----|----|
| Ladies' sizes | 10 | 12 | 14 | 16 |
|---------------|----|----|----|----|



Pencil Skirt



Style no: **CSKG115** (Girls)
Style no: **CSKL115** (Ladies)

MADE TO ORDER ONLY

- Invisible back zip
- Button fastening on waist band
- Split back
- Pin tuck pleats at front.
- Minimum order 60 pieces per colour & 12 pieces per size



Fabric: 58% Polyester / 38% Viscose / 4% Elastane

Weight: 110 gsm

| | | | | |
|-------------|-----|------|-------|----|
| Girls years | 7/8 | 9/10 | 11/12 | 13 |
|-------------|-----|------|-------|----|

| | | | | | |
|---------------|---|----|----|----|----|
| Ladies' sizes | 8 | 10 | 12 | 14 | 16 |
|---------------|---|----|----|----|----|

Front and Back 2 Pleats Skirt



Style no: **CSKGDMX**

MADE TO ORDER ONLY

Lining (Optional)

- Two inverted pleats front and back
- Waist band with side zip and button fastening
- Internal elastic adjuster
- Minimum order 60 pieces per colour & 12 pieces per size



Fabric: 65% Polyester / 35% Viscose

(Lining optional)

| | | | | | | |
|-------------|-----|-----|-----|-----|------|------|
| Girls waist | 22" | 24" | 26" | 28" | *30" | *32" |
|-------------|-----|-----|-----|-----|------|------|

*Sizes 30"+ are subject to VAT

4 Button Waist Skirt



Style no: **CSKG126**

- Elasticated back
- Two front pleats
- Two loops & four button detail on front



Fabric: 58% Polyester / 38% Viscose / 4% Elastane

Weight: 110 gsm

| | | | | | | | | | | |
|-------------|-----|-----|-----|-----|-----|-----|------|-------|-------|----|
| Girls years | 3/4 | 4/5 | 5/6 | 6/7 | 7/8 | 8/9 | 9/10 | 10/11 | 11/12 | 13 |
|-------------|-----|-----|-----|-----|-----|-----|------|-------|-------|----|

P.E. Skirt



Style no: **CSKG06**

MADE TO ORDER ONLY

- Adjustable waistband with a slider hook
- Wrap over front panel
- Pleated sides and back
- Minimum order 60 pieces per colour & 12 pieces per size



Fabric: 100% Polyester

| | | | | | | | | |
|-------------|-----|-----|-----|-----|------|------|------|------|
| Girls waist | 22" | 24" | 26" | 28" | *30" | *32" | *34" | *36" |
|-------------|-----|-----|-----|-----|------|------|------|------|

*Sizes 30"+ are subject to VAT

CLEARANCE



Twisted Gore Skirt



Style no: CSKG07 (Girls)
Style no: CSKL07 (Ladies)

- Elasticated waistband
- Twisted multi panels all round



Fabric: 58% Polyester / 38% Viscose / 4% Elastane

| | | | | | | |
|--------------|-----|-----|-----|------|-------|-----|
| Girls years | 3/4 | 5/6 | 7/8 | 9/10 | 11/12 | 13 |
| Waist to fit | 18" | 22" | 24" | 26" | 28" | 29" |

| | | | | | |
|---------------|---|----|----|----|----|
| Ladies' sizes | 8 | 10 | 12 | 14 | 16 |
|---------------|---|----|----|----|----|



CLEARANCE



Knife Pleat Ribbon Skirt - Primary



Style no: CSKG11

- Fashion belt loops with button details and belt ribbon
- Half elasticated back waist
- 4 stitch-down knife pleats front



Fabric: 100% Polyester

| | | | | | | |
|-------------|-----|-----|-----|------|-------|----|
| Girls years | 3/4 | 5/6 | 7/8 | 9/10 | 11/12 | 13 |
|-------------|-----|-----|-----|------|-------|----|

8 Pleat Skirt - Secondary



Style no: CSKG117

- Drop waist
- 4 pleats at front and back
- Back zip opening



Fabric: 100% Polyester

| | | | | | | |
|-------------|-----|-----|------|-------|----|--------|
| Girls years | 5/6 | 7/8 | 9/10 | 11/12 | 13 | 15/16* |
|-------------|-----|-----|------|-------|----|--------|

*age 15/16 is subject to VAT



All Box Pleat School Skirt - Primary



Style no: CSKG01

- Fully elasticated waist
- All around box pleats



Fabric: 100% Polyester

| | | | | | | | | | |
|-------------|-----|-----|-----|-----|-----|-----|------|-------|----|
| Girls years | 3/4 | 4/5 | 5/6 | 6/7 | 7/8 | 8/9 | 9/10 | 11/12 | 13 |
|-------------|-----|-----|-----|-----|-----|-----|------|-------|----|



Knife Pleat Skirt MM Fabric



Style no: CSKG08

- Full elastic waist
- Knife pleats all around



Fabric: Esholt 100% Polyester MM (Marton Mills)

| | | | | | | | | | |
|-------------|-----|-----|-----|-----|-----|-----|------|-------|----|
| Girls years | 3/4 | 4/5 | 5/6 | 6/7 | 7/8 | 8/9 | 9/10 | 11/12 | 13 |
|-------------|-----|-----|-----|-----|-----|-----|------|-------|----|



Front Box Pleat School Skirt - Primary



Style no: **CSKG02**

- Half elasticated waist
- Single box pleat front



Fabric: 65% Polyester / 35% Viscose
Weight: 110 gsm

Girls years | 3/4 | 4/5 | 5/6 | 6/7 | 7/8 | 9/10 | 11/12 | 13



City Shorts



Style no: **CSTG01**

- 2 button extended waistband
- Zip front
- 1 pocket at front
- Turn up bottoms



Fabric: 58% Polyester / 38% Viscose / 4% Elastane

Girls years | 5/6 | 7/8 | 9/10 | 11/12 | 13 | 15/16*

*age 15/16 is subject to VAT



Skorts



Style no: **CSKG12**

MADE TO ORDER ONLY

- Half-elasticated waist at back
- Wrap over front
- Built-in cycling shorts
- Pull on style.
- Minimum order 60 pieces per colour & 12 pieces per size
- Other colours may be available on request.



Fabric: 58% Polyester / 38% Viscose / 4% Elastane

Girls years | 4/5 | 5/6 | 6/7 | 7/8 | 8/9 | 9/10 | 10/11 | 11/12 | 12/13



Cullotes



Style no: **CSKG109**

- 2 pleats at front and back
- Button fastened waist
- Zip opening at front



Fabric: 58% Polyester / 38% Viscose / 4% Elastane

Girls years | 5/6 | 7/8 | 9/10 | 11/12 | 13 | 15/16*

*age 15/16 is subject to VAT



Big Button Loop Straight Leg Trousers

Ribbon Straight Leg Trousers - Primary

Sturdy Fit Trousers

3 Button Straight Leg Trousers - Primary



Style no: **CTRG134**



Style no: **CTRG127**



Style no: **CTRG99**



Style no: **CTRG100**

- Elasticated back
- Two round front pockets
- Two big button on top of the pockets and two big loops on sizes 9-10 upwards

- Half elasticated back
- Ribbon detail on waistband
- 1 side pocket
- Pull on straight leg style

- Elasticated back
- One front side zip pocket
- One coin pocket
- Button front waist band
- Zip fly

- 3 button extended waistband
- Half elastic back
- Mock fly for sizes 3/4 to 7/8
- Zip front for sizes 9/10 to 15/16



Fabric: 100% Polyester

Fabric: 58% Polyester / 38% Viscose / 4% Elastane

Fabric: 58% Polyester / 38% Viscose / 4% Elastane

Fabric: 100% Polyester

| | | | | | | | |
|-------------|-----|-----|-----|------|-------|----|--------|
| Girls years | 3/4 | 5/6 | 7/8 | 9/10 | 11/12 | 13 | 15/16* |
|-------------|-----|-----|-----|------|-------|----|--------|

*age 15/16 is subject to VAT

| | | | | | | | |
|-------------|-----|-----|-----|------|-------|----|--------|
| Girls years | 3/4 | 5/6 | 7/8 | 9/10 | 11/12 | 13 | 15/16* |
|-------------|-----|-----|-----|------|-------|----|--------|

*age 15/16 is subject to VAT

| | | | | | |
|-------------|-----|-----|------|-------|----|
| Girls years | 5/6 | 7/8 | 9/10 | 11/12 | 13 |
|-------------|-----|-----|------|-------|----|

| | | | | | | | | | | |
|-------------|-----|-----|-----|-----|-----|-----|------|-------|----|--------|
| Girls years | 3/4 | 4/5 | 5/6 | 6/7 | 7/8 | 8/9 | 9/10 | 11/12 | 13 | 15/16* |
|-------------|-----|-----|-----|-----|-----|-----|------|-------|----|--------|

*age 15/16 is subject to VAT



Straight Leg Hipster Trousers



Style no: **CTRG141**

- Full waistband with double hook and bar fastening
- Zip front
- Two front mock pockets
- Two mock back pockets with button and loop detail
- Two button and loop detail on back waistband



Fabric: 58% Polyester / 38% Viscose / 4% Elastane

Girls years | 7/8 | 9/10 | 11/12 | 13 | 15/16*

*age 15/16 is subject to VAT



Straight Leg Trousers - Internal Elastic Adjuster



Style no: **CTRG142**

- Internal elastic adjuster
- Two side pockets
- Button front
- Zip fly
- Elasticated adjuster with one button on the inside of the waist band



Fabric: 58% Polyester / 38% Viscose / 4% Elastane

Girls years | 5/6 | 7/8 | 9/10 | 11/12 | 13 | 15/16*

*age 15/16 is subject to VAT

CLEARANCE



2 Button Bootleg Trousers



Style no: **CTRG82**

- Extended broad waistband with 2 loops and 2 buttons
- Stitch down seam at front



Fabric: 100% Polyester

Girls years | 5/6 | 7/8 | 9/10 | 11/12 | 13 | 15/16*

*age 15/16 is subject to VAT

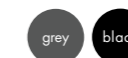


2 Button Heart Ring Straight Leg Trousers



Style no: **CTRG82E**

- Elasticated back
- Double belt with two buttons
- Two loops
- Zip front



Fabric: 58% Polyester / 38% Viscose / 4% Elastane

Girls years | 3/4 | 4/5 | 5/6 | 6/7 | 7/8 | 8/9



Two Flap Button Pinafore



Style no: CPIG03

- Zip front
- 2 flap buttons on waist
- Pleated all round
- Taped neck and arm holes



Fabric: 65% Polyester / 35% Viscose

Girls years | 3/4 | 4/5 | 5/6 | 6/7 | 7/8 | 8/9 | 9/10 | 11/12

Pleated-Front Pinafore



Style no: CPIG02

- Box pleats at front
- Zip fastening on left side
- Two darts at front for shaping



Fabric: 65% Polyester / 35% Viscose

Girls years | 3/4 | 4/5 | 5/6 | 6/7 | 7/8 | 8/9 | 9/10 | 11/12



Bib Pinafore All around Pleat Skirt



Style no: CPIG69

- Two button front waist
- Wrapover skirt front
- Box pleats on back and front



Fabric: Esholt 100% Polyester MM (Marton Mills)

Girls years | 3/4 | 4/5 | 5/6 | 6/7 | 7/8 | 8/9 | 9/10 | 11/12



Bib Pinafore plain front Skirt



Style no: CPIG68

- Two button front waist
- Wrapover skirt front
- Knife pleats on back and sides
- Plain front



Fabric: Esholt 100% Polyester MM (Marton Mills)

Girls years | 3/4 | 4/5 | 5/6 | 6/7 | 7/8 | 8/9 | 9/10 | 11/12



Zip Front 2 Beltloop Pinafore



Style no: **CPIG135**

MADE TO ORDER ONLY

- Zip front with a heart shapes puller
- Two belt loops at front waist band with heart shaped buttons
- Inverted pleat front skirt
- Minimum order 60 pieces per colour & 12 pieces per size



Fabric: 58% Polyester / 38% Viscose / 4% Elastane

Girls years | 3/4 | 4/5 | 5/6 | 6/7 | 7/8 | 8/9 | 9/10 | 11/12

Button-Front Pinafore



Style no: **CPIG01**

- 4 self-coloured buttons
- 6 pleats at front
- Slit at the back



Fabric: 58% Polyester / 38% Viscose / 4% Elastane

Girls years | 3/4 | 4/5 | 5/6 | 6/7 | 7/8 | 8/9 | 9/10 | 11/12

CLEARANCE



Gingham Check Dress



Style no: **CDRK01**

- White knitted collar with matching tips
- Matching hair scrunchie
- Button front
- Left breast pocket
- Short sleeves



Fabric: 72% Polyester / 28% Viscose

Girls years | 3/4 | 4/5 | 5/6 | 6/7 | 7/8 | 9/10 | 11/12

CLEARANCE



Girls School Summer Dress

Style no: **CDRK03**



- Tipped white collar with scalped edge
- Cap sleeves
- Left breast pocket with white piping
- Button front



Fabric: Body: 80% Polyester / 20% Viscose
Collar: 65% Polyester / 35% Cotton

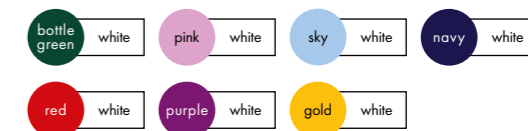
Girls years | 4/5 | 5/6 | 6/7 | 7/8 | 8/9 | 9/10 | 10/11 | 11/12

Zip-Front Gingham Check Dress



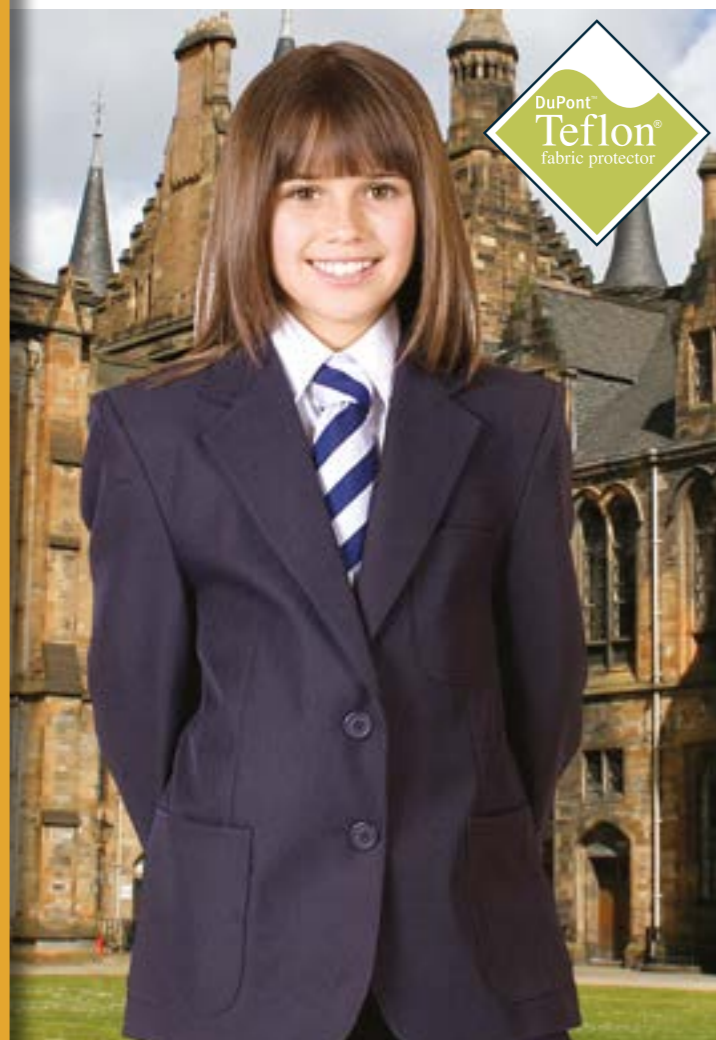
Style no: **CDRK02**

- White knitted collar with matching tips
- Zip front with heart-shaped puller
- Left breast pocket
- Short sleeves
- Lace details on pocket and sleeves
- Matching hair scrunchie



Fabric: 72% Polyester / 28% Viscose

Girls years | 3/4 | 4/5 | 5/6 | 6/7 | 7/8 | 8/9 | 9/10 | 11/12



CLEARANCE



Italian 'Enduro' Wool

CLEARANCE



School Blazer



Style no: **CBZG01N**

- Teflon coated machine-washable
- Heavy 100% polyester
- Water-repellent and stain-resistant
- Sew-on pocket patch for badge embroidery
- 3 outer pockets and 2 internal pockets
- 2 self coloured buttons (2 spare buttons)
- Retail hanger packed
- Hanging loop and name tag
- Zip access for embroidery



*Royal available up to 30" only

Fabric: 100% Polyester (Teflon Coated)

| Size | 0 | 1 | 2 | 3 | 4 | 5 | 6 | 7 | 8 | 9 | 10 | 11 | 12 | 14 | 16 | 18 | 20 | 22 | 24 | 26 |
|-------------------|-----|-----|-----|-----|-----|-----|-----|-----|------|-------|-------|-------|-----|-----|-----|-----|-----|-----|-----|-----|
| To fit chest | 22" | 23" | 24" | 25" | 26" | 27" | 28" | 29" | 30" | 31" | 32" | 33" | 34" | 36" | 38" | 40" | 42" | 44" | 46" | 48" |
| Age (approximate) | 1/2 | 2/3 | 3/4 | 4/5 | 5/6 | 6/7 | 7/8 | 8/9 | 9/10 | 10/11 | 11/12 | 12/13 | 13 | 14 | 15 | 16+ | | | | |

School Blazer



Style no: **CBZG01** Zip access for embroidery
Style no: **CBZG02** NO zip access for embroidery

- Teflon coated machine-washable
- Water-repellent and stain-resistant
- Sew-on pocket patch for badge embroidery
- 3 outer pockets and 2 internal pockets
- 2 self coloured buttons (2 spare buttons)
- Retail hanger packed
- Hanging loop and name tag



Fabric: 100% Polyester (Teflon Coated)

Girls Tailored Fit Blazer



Style no: **CBZG06**

- Teflon coated machine-washable
- Heavy 100% polyester
- Water-repellent and stain-resistant
- Sew-on pocket patch for badge embroidery
- 3 outer pockets and 2 internal pockets
- 2 self coloured buttons (2 spare buttons)
- Retail hanger packed
- Hanging loop and name tag
- Zip access for embroidery
- Shaped fit with cover stitched panels at front & back
- Striped lining throughout the sleeves
- Internal mobile phone pocket



Fabric: 100% Polyester (Teflon Coated)

Weight: 280 gsm

| Size | 6 | 8 | 10 | 12 | 14 | 16 | 18 |
|-------------------|-----|------|-------|-----|-----|-----|-----|
| To fit chest | 28" | 30" | 32" | 34" | 36" | 38" | 40" |
| Age (approximate) | 7/8 | 9/10 | 11/12 | 13 | 14 | 15 | 16+ |

GIRLS Wool Blend BLAZER



Style no: **CBZG10**

- Luxurious Italian wool (80% wool / 20% polyamide)
- 100 % polyester satin lining
- 3 self coloured buttons (2 spare buttons)
- 20cm x 20cm piece of fabric in the top pocket
- Woven hanger loop
- 3 outer pockets and 2 internal pockets
- Lined pockets
- 25cm invisible zip access for embroidery
- Lining / facing 1cm above inside of chest pocket
- Hanger packed with poly back cover.



| Kids' Sizes | 9 | 10 | 11 | 12 | 13 | 14 | 15 | 16 | 17 | 18 |
|--------------|-----|-------|-------|-----|-------|-----|-------|-----|-------|-----|
| To fit chest | 31" | 32" | 33" | 34" | 35" | 36" | 37" | 38" | 39" | 40" |
| Age | 10 | 11/12 | 12/13 | 13 | 13/14 | 14 | 14/15 | 15 | 15/16 | 16 |

| Kids' Sizes | 19 | 20 |
|--------------|-----|-----|
| To fit chest | 41" | 42" |
| Age | 16+ | |

BESPOKE BLAZERS

CHOOSE YOUR OUTER FABRIC

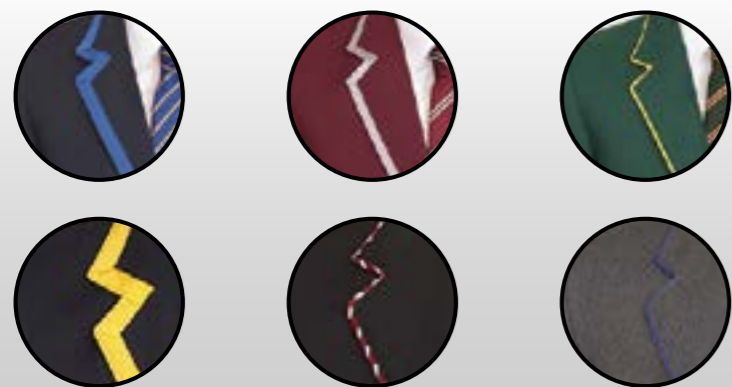
From our range of fabrics



CONTRAST PIPING WITH SHAPED DESIGN NEAR THE INSIDE POCKET

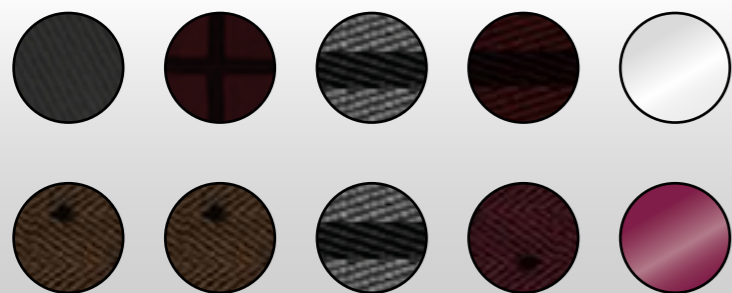
CHOOSE YOUR BRAIDING

Bound • Taped or corded edges



CHOOSE YOUR LINING

From our range of fabrics

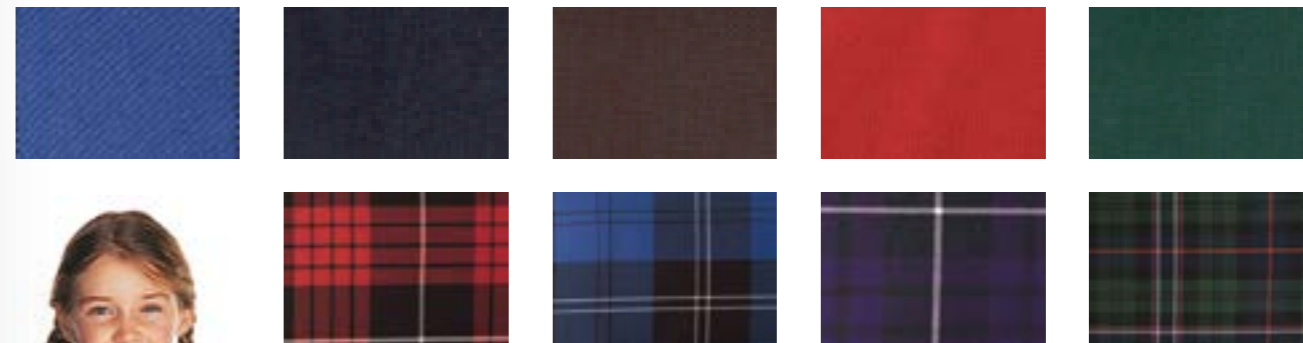


*A choice of trim options and alternative linings are available to give a personalised feel to school uniforms.

BESPOKE SKIRTS & PINAFORES

CHOOSE YOUR FABRIC

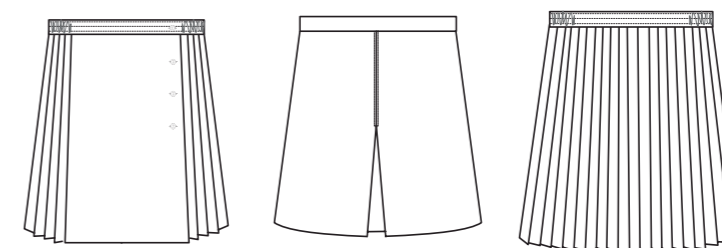
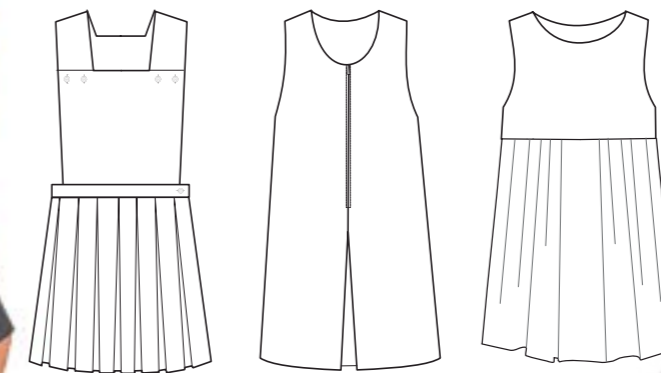
From our extended range of plain & tartan fabrics



(Many more options available)

CHOOSE YOUR STYLE

From our range or your own style



BESPOKE TIES

Made-To-Order School Ties



Style no: **CTIK01**

- Made to order only - minimum order of 48 pieces per style
- Any pattern and colour made to your specification
- Ties with jacquard motifs also available

Style options: Standard or Elasticated

Sizes: Any Size on Request

Delivery: 6 Weeks From Date of Sample Approval



BESPOKE KNITWEAR



1. CHOOSE YOUR STYLE

- **Cardigans**
- **Jumpers**
- **Slipovers**

2. CHOOSE YOUR FABRIC

- **80% Acrylic / 20% Wool**
- **100% Acrylic**
- **50% Cotton / 50% Acrylic**

3. CREATE YOUR OWN STRIPES



LEISUREWEAR

CONTENTS



Polo Shirts 51



T-Shirts 56



Sweatshirts 61



Onesies 73



Jogpants 74



Extra Premium Combed Cotton Polo



Style no: **TPK01** (Kids)
Style no: **TPA01** (Adults)

- Premium-weight
- Durable and comfortable 220g pique fabric
- Washes as well as a PC polo
- Reinforced placket design unique to TopSport
- 2 self-coloured buttons
- Pique tape covered back neck
- Ribbed collar & cuffs
- Durable fully taped and double stitched shoulder seams
- Name label



Fabric: 100% Combed Cotton

Weight: 220 gsm

| To Fit Age | 3/4 | 4/5 | 5/6 | 7/8 | 9/10 | 11/12 | 13 |
|--------------|-----|-----|-----|-----|------|-------|-----|
| Chest to fit | 24" | 25" | 26" | 28" | 30" | 32" | 34" |

| Adults | S | M | L | XL | XXL | 3XL | 4XL |
|--------|---|---|---|----|-----|-----|-----|
|--------|---|---|---|----|-----|-----|-----|



Hi-Spec Premium PC Polo



Style no: **TPK02** (Kids)
Style no: **TPA02** (Adults)

- Heavyweight durable 210g PC pique fabric
- 2 self coloured buttons
- Reinforced placket design unique to TopSport
- Ribbed collar and cuffs
- Durable tape-reinforced and double stitched shoulder seams
- Name label



Fabric: 50% Polyester / 50% Supercarded Ringspun Cotton

Weight: 210 gsm

| To Fit Age | 1/2 | 2/3 | 3/4 | 4/5 | 5/6 | 7/8 | 9/10 | 11/12 | 13 |
|--------------|-----|-----|-----|-----|-----|-----|------|-------|-----|
| Chest to fit | 20" | 22" | 24" | 25" | 26" | 28" | 30" | 32" | 34" |

| Adults | S | M | L | XL | XXL | 3XL | 4XL |
|--------|---|---|---|----|-----|-----|-----|
|--------|---|---|---|----|-----|-----|-----|



Extreme Value Hi-Spec PC Polo



Style no: **TPK03** (Kids)
Style no: **TPA03** (Adults)

- Mid-weight durable & hardwearing 180g PC pique fabric
- 2 self-coloured button placket
- Reinforced placket design unique to TopSport
- Pique tape covered back neck
- Ribbed collar and cuffs
- Durable tape-reinforced and double stitched shoulder seams
- Name label



Fabric: 65% Polyester / 35% Supercarded Ringspun Cotton
Weight: 180 gsm

| To Fit Age | 3/4 | 5/6 | 7/8 | 9/10 | 11/12 | 13 |
|--------------|-----|-----|-----|------|-------|-----|
| Chest to fit | 24" | 26" | 28" | 30" | 32" | 34" |
| Adults | S | M | L | XL | XXL | 3XL |

Hardwearing PC Polo



Style no: **JPK599** (Kids)
Style no: **JPA599** (Adults)

- Hard wearing polo shirt suitable for 60°C wash
- Double ripple effect on collar and cuffs
- Side vents for ease of fit
- Reinforced shoulder seams
- 2 button placket with spare button
- Name label



Fabric: 65% Polyester / 35% Ring Spun Cotton
Weight: Colours: 215 gsm; White: 210 gsm

| To Fit Age | 3/4 | 5/6 | 7/8 | 9/10 | 11/12 |
|--------------|--------|--------|--------|--------|--------|
| Chest to fit | 24/25" | 25/28" | 28/30" | 30/32" | 32/34" |
| Adults | XS | S | M | L | XL |

Classic PC Polo



Style no: **JPK539** (Kids)
Style no: **JPA539** (Adults)

- Unique double yarn construction
- 2 button placket with spare button
- Name label.



Fabric: 65% Polyester / 35% Ringspun Cotton
Weight: Colours: 215 gsm; White: 210 gsm

| To Fit Age | 1/2 | 3/4 | 5/6 | 7/8 | 9/10 | 11/12 |
|--------------|--------|--------|--------|--------|--------|--------|
| Chest to fit | 20/22" | 22/25" | 25/28" | 28/30" | 30/32" | 32/34" |
| Adults | XS | S | M | L | XL | XXL |

Standard PC Polo



Style no: **SPK** (Kids)
Style no: **SPA** (Adults)

- Fused placket with 2 self coloured buttons
- Reinforced shoulder seams and taped neckline
- Guaranteed to perform at 60° wash.



Fabric: 65% Polyester / 35% Cotton
Weight: Colours: 180 gsm; White: 170 gsm

| To Fit Age | 3/4 | 5/6 | 7/8 | 9/11 | 12/13 | 14/15* |
|--------------|--------|--------|-----|------|-------|--------|
| Chest to fit | 22/24" | 26/28" | 30" | 32" | 34" | 36" |
| Adults | S | M | L | XL | XXL | 3XL |

*age 14/15 is subject to VAT



Premium Tipped PC Polo

Double Tipped Polo

Long-Sleeve Premium PC Polo

Just Cool Polo



Style no: **TPK02T** (Kids)
Style no: **TPA02T** (Adults)



Style no: **H459B** (Kids)
Style no: **H459M** (Adults)



Style no: **TPK02L** (Kids)
Style no: **TPA02L** (Adults)



Style no: **JC040B** (Kids)
Style no: **JC040M** (Adults)

- Double band tipped rib collar and cuffs
- Heavy-weight durable PC pique fabric
- 2 self coloured buttons
- Unique reinforced placket design
- Pique tape-covered back neck
- Tape-reinforced and double stitched shoulder seams
- Name label.

- Contrast double tipped detail on collar and cuffs
- Stand-up collar for shape retention
- Self coloured buttons
- WRAP approved manufacturer.

- Heavyweight durable 210g PC pique fabric
- 2 self coloured buttons
- Reinforced placket design unique to TopSport
- Ribbed collar and cuffs
- Durable tape-reinforced and double stitched shoulder seams
- Name label

- Set-in sleeve design with 2 button placket
- Self coloured buttons
- AWDis's own Neoteric™ textured fabric with inherent wickability
- Self fabric taped back neck and collar
- Twin needle stitching detail
- UPF 30+ UV Protection



Adults:



Other colours available on request (for forward orders only).

Fabric: 65% Polyester / 35% Cotton Pique
Weight: 200 gsm

Fabric: 50% Polyester / 50% Supercarded Ringspun Cotton
Weight: 210 gsm

| To Fit Age | 3/4 | 5/6 | 7/8 | 9/10 | 11/12 | 13 |
|--------------|-----|-----|-----|------|-------|-----|
| Chest to fit | 24" | 26" | 28" | 30" | 32" | 34" |

| Adults | S | M | L | XL |
|--------|---|---|---|----|
|--------|---|---|---|----|

| To Fit Age | 3/4 | 5/6 | 7/8 | 9/10 | 11/12 |
|--------------|-----|-----|-----|------|-------|
| Chest to fit | 24" | 26" | 28" | 30" | 32" |

| Adults | XS | S | M | L | XL | XXL |
|--------|----|---|---|---|----|-----|
|--------|----|---|---|---|----|-----|

Fabric: 50% Polyester / 50% Supercarded Ringspun Cotton
Weight: 210 gsm

| To Fit Age | 3/4 | 5/6 | 7/8 | 9/10 | 11/12 | 13 |
|--------------|-----|-----|-----|------|-------|-----|
| Chest to fit | 24" | 26" | 28" | 30" | 32" | 34" |

| Adults | S | M | L | XL |
|--------|---|---|---|----|
|--------|---|---|---|----|

Fabric: 100% Polyester
Weight: 140 gsm

| To Fit Age | 3/4 | 5/6 | 7/8 | 9/11 | 12/13 |
|--------------|-----|-----|-----|------|-------|
| Chest to fit | 24" | 26" | 28" | 30" | 32" |

| Adults | S | M | L | XL | 2XL | 5XL |
|--------|---|---|---|----|-----|-----|
|--------|---|---|---|----|-----|-----|



Valuweight Crew T-Shirt



Style no: **STVK** (Kids)
Style no: **STVA** (Adults)

- Fine knit gauge, side seams
- Cotton/lycra rib crew neck with taped neckline
- Twin needle stitching detail on neck



Fabric: **100% Cotton** Ash Grey: **99% Cotton / 1% Polyester**
Heather Grey: **97% Cotton / 3% Polyester**
Weight: Colours: 165 gsm; White: 160 gsm

| To Fit Age | 3/4 | 5/6 | 7/8 | 9/11 | 12/13 | 14/15* |
|--------------|--------|--------|-----|------|-------|--------|
| Chest to fit | 22/24" | 26/28" | 30" | 32" | 34" | 36" |

*age 14/15 is subject to VAT

| Adults | S | M | L | XL | XXL | 3XL |
|--------|---|---|---|----|-----|-----|
|--------|---|---|---|----|-----|-----|

Toddlers Valuweight Crew T-Shirt



Style no: **STVT**

- Fine knit gauge
- Cotton/lycra rib crew neck with taped neckline
- Side seams
- Twin needle stitching detail on neck
- Sleeves and hem
- Toddlers T-Shirt metal detected in line with European babywear legislation



Fabric: **100% Cotton**
Weight: Colours: 165 gsm; White: 160 gsm

| Toddlers' years | 1/2 | 2/3 |
|-----------------|-----|-----|
| Chest to fit | 18" | 20" |



Kids Original T-Shirt



Style no: **SS132B** (Kids)
Style no: **SS022M** (Men)
Style no: **SS129** (Ladies)

- Rib crew neck with self-fabric back neck tape
- Produced using Belcoro® yarn for a cleaner, more stable print area
- Fine knit gauge for enhanced printability



Fabric: **100% Cotton** *Heather Grey: **97% Cotton / 3% Polyester**
Weight: Colours: 145 gsm; White: 135 gsm

| To Fit Age | 3/4 | 5/6 | 7/8 | 9/11 | 12/13 | 14/15* |
|--------------|--------|--------|-----|------|-------|--------|
| Chest to fit | 22/24" | 26/28" | 30" | 32" | 34" | 36" |

*age 14/15 is subject to VAT

| Men | S | M | L | XL | 2XL | |
|--------|----|---|---|----|-----|-----|
| Ladies | XS | S | M | L | XL | 2XL |

Classic Crew T-Shirt



Style no: **JTK180** (Kids)
Style no: **JTA180** (Adults)

- Softer hand feel
- Shoulder to shoulder taping for added comfort
- Tubular construction for superior shape retention



Fabric: **100% Ringspun Cotton**
*Light Oxford: **93% Cotton / 7% Viscose**
Weight: Colours: 180 gsm; White: 175 gsm

| To Fit Age | 1/2 | 3/4 | 5/6 | 7/8 | 9/10 | 11/12 |
|--------------|--------|--------|--------|--------|--------|--------|
| Chest to fit | 20/22" | 22/25" | 25/28" | 28/30" | 30/32" | 32/34" |

| Adults | XS | S | M | L | XL | XXL | 3XL | 4XL |
|--------|----|---|---|---|----|-----|-----|-----|
|--------|----|---|---|---|----|-----|-----|-----|



Boys & Mens Softspun T-Shirt



Style no: **SS124B** (Boys)
Style no: **SS124M** (Men)

- Innovative Softspun fabric with a super soft feel
- Fashion fit for a retail look
- Crew neck with cotton/Lycra rib and single needle stitching
- Self-fabric shoulder to shoulder taping



Fabric: 100% Cotton *Heather Grey: 97% Cotton / 3% Polyester
Weight: Colours: 165gsm; White: 160 gsm

| To Fit Age | 3/4 | 5/6 | 7/8 | 9/11 | 12/13 | 14/15* |
|--------------|--------|--------|-----|------|-------|--------|
| Chest to fit | 22/24" | 26/28" | 30" | 32" | 34" | 36" |

*age 14/15 is subject to VAT

| Adults | S | M | L | XL | 2XL - 3XL |
|--------|---|---|---|----|-----------|
|--------|---|---|---|----|-----------|

Kids HD T-Shirt



Style no: **JTK165** (Kids)
Style no: **JTA165** (Adults)

- Crew neck with single needle stitching
- Polycotton mix
- Retail slim fit
- Shoulder to shoulder tape
- Removable, adhesive neck label
- Side seamed



Fabric: 65% Polyester / 35% Ringspun Combed Cotton
Weight: Colours: 160 gsm; White: 155 gsm

| To Fit Age | 5/6 | 7/8 | 9/10 | 11/12 | 13/14 |
|--------------|--------|--------|--------|--------|--------|
| Chest to fit | 25/28" | 28/30" | 30/32" | 32/34" | 34/36" |

| Adults | XS | S | M | L | XL | 2XL | 3XL |
|--------|----|---|---|---|----|-----|-----|
|--------|----|---|---|---|----|-----|-----|



Kids Sublimation T-Shirt



Style no: **JS001B**

- Designed for sublimation printing
- Set in sleeve design
- Just Sub's own Neoteric(TM) textured sublimation fabric with inherent wickability
- Self fabric taped back neck
- Twin needle stitching detail
- Rib collar
- Worldwide Responsible Accredited Production (WRAP) certified production



Fabric: 100% Polyester
Weight: 185 gsm

| To Fit Age | 3/4 | 5/6 | 7/8 | 9/11 | 12/13 |
|------------|-----|-----|-----|------|-------|
|------------|-----|-----|-----|------|-------|



Premium-Weight Crew T-Shirt



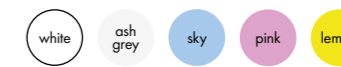
Style no: **TTB01** (Toddlers)
Style no: **TTK01** (Kids)
Style no: **TTA01** (Adults)

- Luxurious heavy-weight fine knit fabric
- Set-in sleeves
- Elastane-mix ribbed collar for maximum shape retention
- Tape-strengthened back-neck & shoulder seams
- Toddlers T-Shirt metal detected in line with European babywear legislation
- Double stitched seams around neck and shoulder

Kids' colours



Toddlers' colours



Fabric: 100% Supercarded Ringspun Cotton / fine gauge knit, part elastane
Weight: 215 gsm

| Toddlers age | 6mth | 12mth | 18mth | 2yr | 3yr |
|--------------|------|-------|-------|-----|-----|
| Chest to fit | 17" | 18" | 20" | 22" | 23" |

| Kids Fit Age | 3/4 | 5/6 | 7/8 | 9/10 | 11/12 | 13 |
|--------------|-----|-----|-----|------|-------|-----|
| Chest to fit | 24" | 26" | 28" | 30" | 32" | 34" |

| Adults | S | M | L | XL | XXL | 3XL |
|--------|---|---|---|----|-----|-----|
|--------|---|---|---|----|-----|-----|



Girls & Ladies Valuweight T-Shirt



Style no: **SS79B** (Girls)
Style no: **STVL** (Ladies)

- Crew neck with Cotton/Lycra rib
- Self-fabric back neck tape
- Girls fit with shaped side seams
- Produced using Belcoro yarn for a softer feel and cleaner printing process
- Fine knit gauge for enhanced printability



Fabric: 100% Cotton *Heather Grey: 97% Cotton / 3% Polyester
Weight: Colours: 165gsm; White: 160 gsm

| Girls years | 3/4 | 5/6 | 7/8 | 9/11 | 12/13 | 14/15* |
|--------------|--------|--------|-----|------|-------|--------|
| Chest to fit | 22/24" | 26/28" | 30" | 32" | 34" | 36" |

*age 14/15 is subject to VAT

| Ladies | XS | S | M | L | XL | 2XL |
|--------|----|---|---|---|----|-----|
|--------|----|---|---|---|----|-----|

Girls & Ladies Softspun T-Shirt



Style no: **SS125B** (Girls)
Style no: **SS125M** (Ladies)

- Innovative Softspun fabric with a super soft feel
- Fashion fit for a retail look
- Crew neck with cotton/Lycra rib and single needle stitching
- Self-fabric shoulder to shoulder taping
- Fine knit gauge for enhanced printability



*Girls sizes only

Fabric: 100% Cotton **Heather Grey: 97% Cotton / 3% Polyester
Weight: Colours: 165gsm; White: 160 gsm

| Girls years | 3/4 | 5/6 | 7/8 | 9/11 | 12/13 | 14/15* |
|--------------|--------|--------|-----|------|-------|--------|
| Chest to fit | 22/24" | 26/28" | 30" | 32" | 34" | 36" |

*age 14/15 is subject to VAT

| Ladies | XS | S | M | L | XL | 2XL |
|--------|----|---|---|---|----|-----|
|--------|----|---|---|---|----|-----|



Kids Long Sleeve Valuweight T-Shirt



Style no: **SS019B** (Kids)
Style no: **SS019M** (Adults)

- Crew neck with Cotton/Lycra rib
- Self fabric back neck tape
- Cotton/Lycra rib cuff
- Produced using Belcoro yarn for a softer feel and cleaner printing process
- Fine knit gauge for enhanced printability



Fabric: 100% Cotton, Belcoro® Yarn
*Heather Grey: 97% Cotton / 3% Polyester

Weight: Colours: 165 gsm; White: 160 gsm

| To Fit Age | 3/4 | 5/6 | 7/8 | 9/11 | 12/13 | 14/15* |
|--------------|--------|--------|-----|------|-------|--------|
| Chest to fit | 22/24" | 26/28" | 30" | 32" | 34" | 36" |

*age 14/15 is subject to VAT

| Adults | S | M | L | XL | XXL |
|--------|---|---|---|----|-----|
|--------|---|---|---|----|-----|

CLEARANCE



Kids Raglan Sleeved Sweatshirt



Style no: **TSK06**

- Elastane-mix rib collar, cuffs & border for maximum shape retention
- Twill tape-strengthened back neck and shoulder seam
- Double stitched seams around neck, shoulder and bottom hem



Fabric: 70% Supercarded Ringspun Cotton / 30% Polyester
Weight: 300 gsm

| To Fit Age | 3/4 | 4/5 | 5/6 | 7/8 | 9/10 | 11/12 | 13 |
|--------------|-----|-----|-----|-----|------|-------|-----|
| Chest to fit | 24" | 25" | 26" | 28" | 30" | 32" | 34" |



Premium Hi-Spec Set-In Crew-Neck Sweatshirt



Style no: **TSK01** (Kids)
Style no: **TSA01** (Adults)

- Elastane-mix rib collar, cuffs & border for maximum shape retention
- Twill tape-strengthened back neck and shoulder seam
- Double stitched seams around neck, shoulder and bottom hem

Kids:



Adults:



Fabric: 70% Supercarded Ringspun Cotton / 30% Polyester

Part Elastane

Weight: 300 gsm

| To Fit Age | 1/2 | 2/3 | 3/4 | 4/5 | 5/6 | 7/8 | 9/10 | 11/12 | 13 |
|--------------|-----|-----|-----|-----|-----|-----|------|-------|-----|
| Chest to fit | 20" | 22" | 24" | 25" | 26" | 28" | 30" | 32" | 34" |

| Adults | S | M | L | XL | 2XL |
|--------|---|---|---|----|-----|
|--------|---|---|---|----|-----|

Set-In Crew-Neck Sweatshirt



Style no: **SSDK** (Kids)
Style no: **SSDA** (Adults)

- Comfortable cotton/lycra rib crew neck with self-coloured Jersey taping



Fabric: 80% Cotton / 20% Polyester

Part Lycra

Weight: Colours: 280 gsm; White: 260 gsm

| To Fit Age | 3/4 | 5/6 | 7/8 | 9/11 | 12/13 | 14/15* |
|--------------|--------|--------|-----|------|-------|--------|
| Chest to fit | 22/24" | 26/28" | 30" | 32" | 34" | 36" |

*Age 14/15 is subject to VAT

| Adults | S | M | L | XL | 2XL |
|--------|---|---|---|----|-----|
|--------|---|---|---|----|-----|

Raglan Crew-Neck Sweatshirt



Style no: **SSRK** (Kids)
Style no: **SSRA** (Adults)

- Comfortable cotton/lycra rib crew neck
- Self-coloured jersey taping



Fabric: 80% Cotton / 20% Polyester, Part Lycra

Weight: Colours: 280 gsm; White: 260 gsm

| To Fit Age | 3/4 | 5/6 | 7/8 | 9/11 | 12/13 | 14/15* |
|--------------|--------|--------|-----|------|-------|--------|
| Chest to fit | 22/24" | 26/28" | 30" | 32" | 34" | 36" |

*Age 14/15 is subject to VAT

| Adults | S | M | L | XL | 2XL |
|--------|---|---|---|----|-----|
|--------|---|---|---|----|-----|

Classic Raglan Crew-Neck Sweatshirt



Style no: **JSK762** (Kids)
Style no: **JSA762** (Adults)

- Strengthened seams on raglan shoulder and cuff
- SpotShield™ stain resistant coating for fabric protection
- Fade resistant
- Back neck tape
- Name label



Fabric: 50% Combed Ringspun Cotton / 50% Polyester

Weight: 295 gsm

| To Fit Age | 1/2 | 3/4 | 5/6 | 7/8 | 9/10 | 11/12 |
|--------------|--------|--------|--------|--------|--------|--------|
| Chest to fit | 20/22" | 22/25" | 25/28" | 28/30" | 30/32" | 32/34" |

| Adults | XS | S | M | L | XL | 2XL-4XL |
|--------|----|---|---|---|----|---------|
|--------|----|---|---|---|----|---------|



Kids AWDIs Sweatshirt



Style no: **JH030B** (Kids)
Style no: **JH030** (Adults)

- Set in sleeves
- Soft cotton faced fabric creates ideal printing surface
- Simple tear out label makes it perfect for rebranding
- Twin needle stitching detailing
- Ribbed collar, cuff and hem
- Name label sewn into side seam
- Taped neck



Fabric: 80% Ringspun Cotton / 20% Polyester
Weight: 280 gsm

| To Fit Age | 3/4 | 5/6 | 7/8 | 9/11 | 12/13 | | |
|--------------|-----|-----|-----|------|-------|-----|-----|
| Chest to fit | 26" | 28" | 30" | 32" | 34" | | |
| Adults | XS | S | M | L | XL | 2XL | 3XL |

Kids Acrylic Cotton Mix Sweatshirt



Style no: **TSK10** (Kids Crew Neck)
Style no: **TCK10** (Cardigan)
Style no: **TSK10V** (V-Neck)
Style no: **TSA10** (Adults Crew Neck)
Style no: **TCA10** (Adults Cardigan)
Style no: **TSA10V** (Adults V-Neck)

- Elastane-mix rib collar, cuffs & border for maximum shape retention
- Twill tape-strengthened back neck seam
- Double stitched seams around neck, shoulder, bottom hem & cuffs
- Raglan sleeves



Fabric: 45% Acrylic / 30% Cotton / 15% Polyester / 10% Mixed Fibres
Weight: 280 gsm

| Chest to fit | 22" | 24" | 26" | 28" | 30" | 32" | |
|--------------|-----|-----|-----|-----|------|-------|-----|
| To Fit Age | 2/3 | 3/4 | 5/6 | 7/8 | 9/10 | 11/12 | |
| Adults Size | 34" | XS | S | M | L | XL | XXL |

V-Neck Set-In Sweatshirt



Style no: **JSK272** (Kids)
Style no: **JSA272** (Adults)

- Ring spun cotton for softer feel and superior decoration
- Outstanding performance - wash after wash
- Set-in sleeves and side seams
- Name label
- Suitable for 40 C wash and low temperature tumble dry



Fabric: 50% Combed Ringspun Cotton / 50% Polyester
Weight: 295 gsm

| To Fit Age | 3/4 | 5/6 | 7/8 | 9/10 | 11/12 | |
|--------------|--------|--------|--------|--------|--------|-----|
| Chest to fit | 22/25" | 25/28" | 28/30" | 30/32" | 32/34" | |
| Adults | XS | S | M | L | XL | 2XL |

Premium V-Neck Set-In Sweatshirt



Style no: **TSK02** (Kids)
Style no: **TSA02** (Adults)

- Thick & luxuriously soft-handle cotton-rich fabric
- Set-in sleeves
- Elastane-mix rib collar, cuffs & border for maximum shape retention
- Tape-strengthened back-neck shoulder seams
- Double stitched seams (neck, shoulder & bottom hem)
- Twill tape covered back neck



Fabric: 70% Supercarded Ringspun Cotton / 30% Polyester Part Elastane
Weight: 300 gsm

| To Fit Age | 3/4 | 4/5 | 5/6 | 7/8 | 9/10 | 11/12 | 13 |
|--------------|-----|-----|-----|-----|------|-------|-----|
| Chest to fit | 24" | 25" | 26" | 28" | 30" | 32" | 34" |
| Adults | S | M | L | XL | 2XL | | |



Kids Sweat Jacket



Style no: **SS059B** (Kids)
Style no: **SS059M** (Adults)

- Cadet collar with single jersey back neck tape
- Covered zip for enhanced printability
- Two front pouch pockets
- Waist and cuff in Cotton/Lycra(R) Rib
- Produced using Belcoro yarn for a softer feel and cleaner printing process.



Fabric: 80% Cotton, Belcoro® Yarn / 20% Polyester
Weight: Colours: 280 gsm

| To Fit Age | 5/6 | 7/8 | 9/11 | 12/13 | 14/15* |
|--------------|--------|-----|------|-------|--------|
| Chest to fit | 26/28" | 30" | 32" | 34" | 36" |

*age 14/15 is subject to VAT

| Adults | S | M | L | XL | 2XL |
|--------|---|---|---|----|-----|
|--------|---|---|---|----|-----|



Premium Hooded Raglan Sweatshirt



Style no: **TSK04** (Kids)
Style no: **TSA04** (Adults)

- Raglan sleeves
- Elastane-mix rib cuffs and border for maximum shape retention
- Tape-strengthened back-neck and shoulder seam
- Double stitched seams around neck, armhole, cuffs and bottom hem
- Front pouch pocket
- Self-colour lining inside hood



Fabric: 70% Supercarded Ringspun Cotton / 30% Polyester
Part Elastane

Weight: 300 gsm

| To Fit Age | 1/2 | 2/3 | 3/4 | 5/6 | 7/8 | 9/10 | 11/12 | 13 |
|--------------|-----|-----|-----|-----|-----|------|-------|-----|
| Chest to fit | 20" | 22" | 24" | 26" | 28" | 30" | 32" | 34" |

| Adults | S | M | L | XL | 2XL |
|--------|---|---|---|----|-----|
|--------|---|---|---|----|-----|



Contrast Hooded Raglan Sweatshirt



Style no: **TSK07** (Kids)
Style no: **TSA07** (Adults)

- Hood with contrast lining
- Front pouch pockets
- Twin needle stitching on all seams
- Taped back neck and shoulder seams
- Elastane in rib, cuffs and border
- Raglan sleeves



Fabric: 50% Supercarded Ringspun Cotton / 50% Polyester
Weight: 280 gsm

| To Fit Age | 3/4 | 5/6 | 7/8 | 9/10 | 11/12 | 13 |
|--------------|-----|-----|-----|------|-------|-----|
| Chest to fit | 24" | 26" | 28" | 30" | 32" | 34" |

| Adults | S | M | L | XL | 2XL |
|--------|---|---|---|----|-----|
|--------|---|---|---|----|-----|



Illuminous Hooded Raglan Sweatshirt



Style no: **TSK08**(Kids)
Style no: **TSA08** (Adults)

- Lined hood
- Front pouch pockets
- Twin needle stitching on all seams
- Taped back neck and shoulder seams
- Elastane in rib, cuffs and border
- Raglan sleeves



Fabric: 20% Supercarded Ringspun Cotton / 80% Polyester
Weight: 280 gsm

| To Fit Age | 3/4 | 5/6 | 7/8 | 9/10 | 11/12 | 13 |
|--------------|-----|-----|-----|------|-------|-----|
| Chest to fit | 24" | 26" | 28" | 30" | 32" | 34" |

| Adults | S | M | L | XL |
|--------|---|---|---|----|
|--------|---|---|---|----|



Hooded Set-In Sweatshirt



Style no: **JSK575** (Kids)
Style no: **JSA575** (Adults)

- Front kangaroo pocket
- No drawcord
- Double layer hood



Fabric: 50% Combed Ringspun Cotton / 50% Polyester
Weight: 290 gsm

| To Fit Age | 3/4 | 5/6 | 7/8 | 9/10 | 11/12 |
|--------------|--------|--------|--------|--------|--------|
| Chest to fit | 22/25" | 25/28" | 28/30" | 30/32" | 32/34" |

| Adults | XS | S | M | L | XL | 2XL |
|--------|----|---|---|---|----|-----|
| | | | | | | |

Kids Hoodie



Style no: **JH001B** (Kids)
Style no: **JH001M** (Mens)
Style no: **JH001F** (Ladies)

- Twin needle stitching detail
- Double fabric hood
- Kangaroo pouch pocket with small hidden opening for ear phone cord feed
- Ribbed cuff and hem



Fabric: 80% Cotton / 20% Polyester
Weight: 280 gsm

| To Fit Age | 1/2 | 3/4 | 5/6 | 7/8 | 9/11 | 12/13 |
|--------------|-----|-----|-----|-----|------|-------|
| Chest to fit | 24" | 26" | 28" | 30" | 32" | 34" |

| Mens | XS | S | M | L | XL | 2XL |
|--------|----|---|---|---|----|-----|
| Ladies | XS | S | M | L | XL | 2XL |

Hooded Set-In Sweatshirt



Style no: **SSHK** (Kids)
Style no: **SSHA** (Mens)
Style no: **SS68** (Ladies)

- Double fabric hood without draw cord in line with European childrenswear legislation
- Front pouch pocket
- Single jersey back neck tape



Fabric: 70% Cotton / 30% Polyester
Weight: 280 gsm

| To Fit Age | 5/6 | 7/8 | 9/11 | 12/13 | 14/15* |
|--------------|--------|-----|------|-------|--------|
| Chest to fit | 26/28" | 30" | 32" | 34" | 36" |

*Age 14/15 is subject to VAT

| Mens | S | M | L | XL | 2XL | |
|--------|----|---|---|----|-----|-----|
| Ladies | XS | S | M | L | XL | 2XL |

Kids Lightweight Hooded Sweatshirt



Style no: **SS56B** (Kids)
Style no: **SS56M** (Mens)
Style no: **SS56F** (Ladies)

- Lightweight unbrushed fleece
- Raglan sleeves
- Hood without drawcord, in-line with european childrenswear legislation
- Front pouch pocket
- Waist and cuff in cotton lycra(R) rib
- Produced using Belcoro(R) yarn for a softer feel and cleaner printing process



Fabric: 80% Cotton, Belcoro® Yarn / 20% Polyester
Weight: 240 gsm

| To Fit Age | 5/6 | 7/8 | 9/11 | 12/13 | 14/15* |
|--------------|--------|-----|------|-------|--------|
| Chest to fit | 26/28" | 30" | 32" | 34" | 36" |

*age 14/15 is subject to VAT

| Mens | S | M | L | XL | 2XL | |
|--------|----|---|---|----|-----|-----|
| Ladies | XS | S | M | L | XL | 2XL |



Kids Electric Hoodie



Style no: **JH004B** (Kids)
Style no: **JH004M** (Adults)

- Vibrant eye-catching colours
- Twin needle stitching detailing
- No drawcords - to comply with EU regulations
- Kangaroo pouch pocket with small hidden opening for ear phone cord feed
- Ribbed cuffs and hem
- Hidden ear phone loops



Fabric: 20% Cotton / 80% Polyester
Weight: 280 gsm

| To Fit Age | 3/4 | 5/6 | 7/8 | 9/11 | 12/13 |
|--------------|-----|-----|-----|------|-------|
| Chest to fit | 26 | 28 | 30 | 32 | 34 |

| Adults | S | M | L | XL | 2XL |
|--------|---|---|---|----|-----|
| | | | | | |



Kids Varsity Hoodie



Style no: **JH003B** (Kids)
Style no: **JH003M** (Adults)

- Twin needle stitching detailing
- Double fabric hood with inner contrast
- No drawcords - to comply with EU regulation
- Kangaroo pouch pocket with small opening for ear phone cord feed
- Hidden ear phone loop
- Ribbed cuffs and hem
- Soft cotton faced fabric creates ideal printing surface



Fabric: 80% Cotton / 20% Polyester
Weight: 280 gsm

| To Fit Age | 3/4 | 5/6 | 7/8 | 9/11 | 12/13 |
|--------------|-----|-----|-----|------|-------|
| Chest to fit | 26" | 28" | 30" | 32" | 34" |

| Adults | XS | S | M | L | XL | 2XL |
|--------|----|---|---|---|----|-----|
| | | | | | | |



Hooded Full-Zip Set-In Sweatshirt



Style no: **SSHZK** (Kids)
Style no: **SSHZA** (Adults)

- Double fabric hood without drawcord in line with EC childrenswear legislation
- Set-in sleeves
- Jersey back neck tape
- Narrow covered zip for enhanced printability
- Two deep front pouch pockets.



Fabric: 80% Cotton / 20% Polyester
Weight: White & H/Grey - 260gsm
Colour - 280gsm

| To Fit Age | 5/6 | 7/8 | 9/11 | 12/13 | 14/15* |
|-------------------|-----|-----|------|-------|--------|
| Chest to fit (cm) | 116 | 30" | 32" | 34" | 36" |

*Age 14/15 is subject to VAT

| Adults | S | M | L | XL | 2XL |
|--------|---|---|---|----|-----|
| | | | | | |



Hooded Full-Zip Sweatshirt



Style no: **TSK05** (Kids)
Style no: **TSA05** (Adults)

- Raglan sleeves
- Elastane-mix rib cuffs and border for maximum shape retention
- Tape-strengthened back-neck and shoulder seam
- Double stitched seams around neck, armhole, cuffs and bottom hem
- Two deep front pouch pockets
- Self-colour lining inside hood
- Zip through front



Fabric: 70% Supercarded Ringspun Cotton / 30% Polyester
Part Elastane

Weight: 300 gsm

| To Fit Age | 1/2 | 2/3 | 3/4 | 5/6 | 7/8 | 9/10 | 11/12 | 13 |
|--------------|-----|-----|-----|-----|-----|------|-------|-----|
| Chest to fit | 20" | 22" | 24" | 26" | 28" | 30" | 32" | 34" |

| Adults | S | M | L | XL | 2XL |
|--------|---|---|---|----|-----|
| | | | | | |



Kids Zoodie



Style no: **JH050B** (Kids)
Style no: **JH050M** (Adults)

- Full zip hoodie, Double fabric hood
- Covered main zip with self fabric
- Twin needle stitching detailing
- Kangaroo pouch pocket
- Right hand side pocket has small hidden opening for earphone cord feed
- Ribbed cuff and hem
- No drawcords - to comply with EU regulation
- Self coloured twill tape puller
- Soft cotton faced fabric creates ideal printing surface



Fabric: **80% Ringspun Cotton / 20% Polyester**
Weight: **280 gsm**

| To Fit Age | 3/4 | 5/6 | 7/8 | 9/11 | 12/13 |
|--------------|-----|-----|-----|------|-------|
| Chest to fit | 26" | 28" | 30" | 32" | 34" |

| Adults | S | M | L | XL | 2XL |
|--------|---|---|---|----|-----|
|--------|---|---|---|----|-----|

Kids Varsity Zoodie Jacket



Style no: **JH053B** (Kids)
Style no: **JH053M** (Adults)

- Full zip hoodie with contrast plastic zip
- Twin needle stitching detailing
- Double fabric hood with contrast inner
- Kangaroo pouch pocket
- Hidden ear phone loops
- Right hand side pocket has small hidden openings for earphone cord feed
- Ribbed cuff and hem
- No drawcords - to comply with EU regulation
- Soft cotton faced fabric creates ideal printing surface



Fabric: **80% Ringspun Cotton / 20% Polyester**
Weight: **280 gsm**

| To Fit Age | 3/4 | 5/6 | 7/8 | 9/11 | 12/13 |
|--------------|-----|-----|-----|------|-------|
| Chest to fit | 26" | 28" | 30" | 32" | 34" |

| Adults | S | M | L | XL | 2XL |
|--------|---|---|---|----|-----|
|--------|---|---|---|----|-----|



Kids All In One



Style no: **CC001B** (Kids)
Style no: **CC001** (Adults)

- Zip through front
- Easy tear out back neck label for simple rebranding
- Baggy fit for maximum comfort
- Kangaroo pouch pocket double warmth, ideal lounge wear
- Ribbed cuff and hem
- Single jersey lined hood
- Tapered leg at bottom for a snug fit
- Twin needle stitching detailing
- No drawcords - to comply with EU regulation
- Soft cotton fabric face creates ideal printing surface



Fabric: **80% Cotton / 20% Polyester**
Weight: **280 gsm**

| To Fit Age | 3/4 | 5/6 | 7/8 | 9/10 | 11/12 | 13 |
|--------------|-----|-----|-----|------|-------|-----|
| Chest to fit | 22" | 24" | 26" | 28" | 30.5" | 33" |

| Adults | XS | S-M | L-XL | 2XL |
|--------|----|-----|------|-----|
|--------|----|-----|------|-----|

CLEARANCE



Kids & Adults Onesie



Style no: **TSK09** (Kids)
Style no: **TSA09** (Adults)

- Elastane rib on wrist cuffs
- Set-in sleeves & Front pouch pockets
- Contrast Zip, pouch pocket edge and drawcord (except Black/Black)
- Woven twill taped back neck & shoulders



Fabric: **50% Cotton / 50% Polyester**
Weight: **280 gsm**

| To Fit Age | 3/4 | 5/6 | 7/8 | 9/10 | 11/12 | 13 |
|--------------|-----|-----|-----|------|-------|-----|
| Chest to fit | 26" | 28" | 30" | 32" | 34" | 36" |

| Adults | S | M | L | XL |
|--------------|--------|--------|--------|--------|
| Chest to fit | 36/38" | 38/40" | 40/42" | 42/44" |



Premium Jog Pants



Style no: **TJK01** (Kids)
Style no: **TJA01** (Adults)

- Thick and luxuriously soft-handle cotton-rich fabric
- Elasticated leg ends and waistband with matching drawcord
- 2 side pockets and 1 back pocket
- Name label



Fabric: 70% Cotton / 30% Polyester
Weight: 300 gsm

| To Fit Age | 3/4 | 4/5 | 5/6 | 7/8 | 9/10 | 11/12 | 13 |
|--------------|-----|-----|-----|-----|------|-------|-----|
| Waist to fit | 24" | 25" | 26" | 28" | 30" | 32" | 34" |

Adults **S M L XL 2XL**

Open Bottom Jog Pants



Style no: **TJK02** (Kids)
Style no: **TJA02** (Adults)

- Elasticated waist with matching draw cord
- Two side pockets
- Open bottom



Fabric: 70% Cotton / 30% Polyester
Weight: 280 gsm

| To Fit Age | 3/4 | 5/6 | 7/8 | 9/10 | 11/12 | 13 |
|--------------|-----|-----|-----|------|-------|-----|
| Waist to fit | 24" | 26" | 28" | 30" | 32" | 34" |

Adults **S M L XL 2XL**



Jog Pants



Style no: **JJK750** (Kids)
Style no: **JJA750** (Adults)

- Side pockets
- Elasticated leg ends and waistband



*Bright Royal available in Kids sizes only

Fabric: 50% Combed Ringspun Cotton / 50% Polyester
Weight: 295 gsm

| To Fit Age | 3/4 | 5/6 | 7/8 | 9/10 | 11/12 |
|--------------|--------|--------|--------|--------|--------|
| Waist to fit | 22/25" | 25/28" | 28/30" | 30/32" | 32/34" |

Adults **S M L XL**

Jog Pants



Style no: **SJK** (Kids)
Style no: **SJA** (Adults)

- Elasticated waistband with self coloured draw cord
- Elasticated cuffs
- Side pockets



Fabric: 80% Cotton / 20% Polyester
Weight: 280 gsm

| To Fit Age | 5/6 | 7/8 | 9/11 | 12/13 | 14/15* |
|--------------|--------|-----|------|-------|--------|
| Waist to fit | 26/28" | 30" | 32" | 34" | 36" |

*Age 14/15 is subject to VAT

Adults **S M L XL 2XL**

OUTDOORWEAR

CONTENTS



Fleeces 77



Jackets 80



Waterproof 85



Camouflage 88



Hi-Vis 90



Premium Full-Zip Polar Fleece Jacket



Style no: **TFK01** (Kids)
Style no: **TFA01** (Adults)

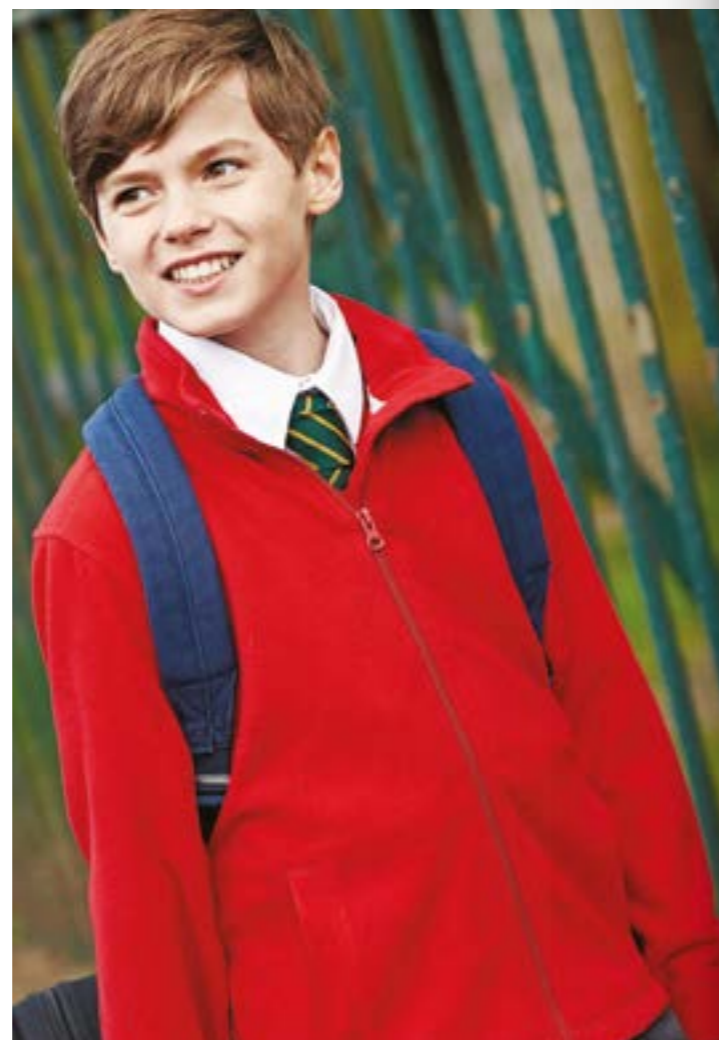
- Warm and super-soft anti-pill polar fleece fabric
- Full length storm flap prevents wind & water from passing through front zip
- Full length internal facings (covers unsightly inside zip seam)
- 2 external front covered zip pockets (fleece-lined for comfort)
- Zip pulls on all zips
- 2 double internal pockets with mobile phone division
- Elasticised cuffs
- Open waist in line with EU regulations
- Twill tape covered back neck
- Hanger loop & name label



Fabric: 100% Polyester / Anti-Pill Fleece
Weight: 300 gsm

| | | | | | | |
|--------------|-----|-----|-----|------|-------|-----|
| To Fit Age | 3/4 | 5/6 | 7/8 | 9/10 | 11/12 | 13 |
| Chest to fit | 24" | 26" | 28" | 30" | 32" | 34" |
| Adults | S | M | L | XL | 2XL | |





Heavy Full Zip Outdoor Fleece



Style no: **JFK870** (Kids)
Style no: **JFA870** (Mens)
Style no: **JFL870** (Ladies)

- Cadet collar
- Zipped hand warmer pockets
- Reverse zippers
- Hanger loop and name label
- Hem bungee cord for adults sizes only



Fabric: 100% Anti-Pill Polyester
Weight: 320 gsm

| To Fit Age | 3/4 | 5/6 | 7/8 | 9/10 | 11/12 |
|--------------|--------|--------|--------|--------|--------|
| Chest to fit | 22/25" | 25/28" | 28/30" | 30/32" | 32/34" |

| | | | | | | |
|--------|----|---|---|---|----|-----|
| Mens | XS | S | M | L | XL | 2XL |
| Ladies | XS | S | M | L | XL | 2XL |

Kids Brigade II Fleece



Style no: **TRF515**

- Layer Lite Fabric Technology
- Quick drying
- Easy care
- Good wicking performance
- Chin guard
- 2 zipped lower fleece pockets
- Layering piece



Fabric: 170 series Microfleece

| To Fit Age | 2 | 3/4 | 5/6 | 7/8 | 9/10 | 11/12 | 32" | 34" |
|-------------------|----|------|-----|-----|------|-------|-----|-----|
| Chest to fit (cm) | 57 | 58.8 | 60 | 64 | 69 | 71 | 76 | 81 |



Quarter Zip Outdoor Fleece



Style no: **JFK874** (Kids)
Style no: **JFA874** (Adults)

- Contemporary styling
- Cadet collar
- Zipped hand-warmer pockets
- Reversed zips
- Hem bungee cord for adults sizes only
- Hanger loop and name label.



Fabric: 100% Anti-Pill Polyester
Weight: 320 gsm

| To Fit Age | 3/4 | 5/6 | 7/8 | 9/10 | 11/12 |
|--------------|--------|--------|--------|--------|--------|
| Chest to fit | 22/25" | 25/28" | 28/30" | 30/32" | 32/34" |

| | | | | | | |
|--------|----|---|---|---|----|-----|
| Adults | XS | S | M | L | XL | 2XL |
|--------|----|---|---|---|----|-----|

Kids Brigade Half Zip Fleece



Style no: **TRF516**

- Layer Lite Fabric Technology
- Quick drying
- Easy care
- Good wicking performance
- Half zip style
- Chin guard
- Layering piece



Fabric: 170 series Microfleece

| To Fit Age | 2 | 3/4 | 5/6 | 7/8 | 9/10 | 11/12 | 32" | 34" |
|-------------------|----|------|-----|-----|------|-------|-----|-----|
| Chest to fit (cm) | 57 | 58.8 | 60 | 64 | 69 | 71 | 76 | 81 |

CLEARANCE



Padded Fleece Jacket

Style no: TFK03 (Kids)



- 2 inside zip pockets
- Full length storm flap prevents wind & water from passing through front zip
- Full length internal facings (covers unsightly inside zip seam)
- 2 external front covered zip pockets
- 2 double internal pockets with mobile phone division
- Elasticised cuffs
- Open waist with adjustable elasticated drawcord



Fabric: 100% Polyester Anti-Pill Fleece
Weight: 300 gsm with 100 gsm Quilted lining

| To Fit Age | 2/3 | 3/4 | 5/6 | 7/8 | 9/10 | 11/12 | 13 |
|--------------|-----|-----|-----|-----|------|-------|-----|
| Chest to fit | 22" | 24" | 26" | 28" | 30" | 32" | 34" |

Kids Classmate Softshell

Style no: TRA683



- Warm backed woven stretch Softshell fabric
- Durable water repellent finish
- Wind resistant
- Quick drying
- Reflective safety piping at shoulder seams
- Reflective trim on back
- 2 zipped lower pockets



Fabric: Warm-backed Softshell Fabric

| To Fit Age | 3/4 | 5/6 | 7/8 | 9/10 | 11/12 | 32" | 34" |
|-------------------|-------|-------|-------|-------|-------|-------|-------|
| Chest to fit (cm) | 53/55 | 55/57 | 59/61 | 63/67 | 69/73 | 75/79 | 79/83 |

Premium Reversible Waterproof Jacket

Style no: TFK06 (Kids)
Style no: TFA06 (Adults)



- Warm and super-soft anti-pill polar fleece fabric on the reverse
- Fully taped 100% waterproof seams
- Full length storm-flap and concealed waterproof hood in collar
- Zip-access lining for easy decoration
- 2 zipped and covered outer pockets on both faces
- Reflective safety patches front & back
- Elasticised cuffs



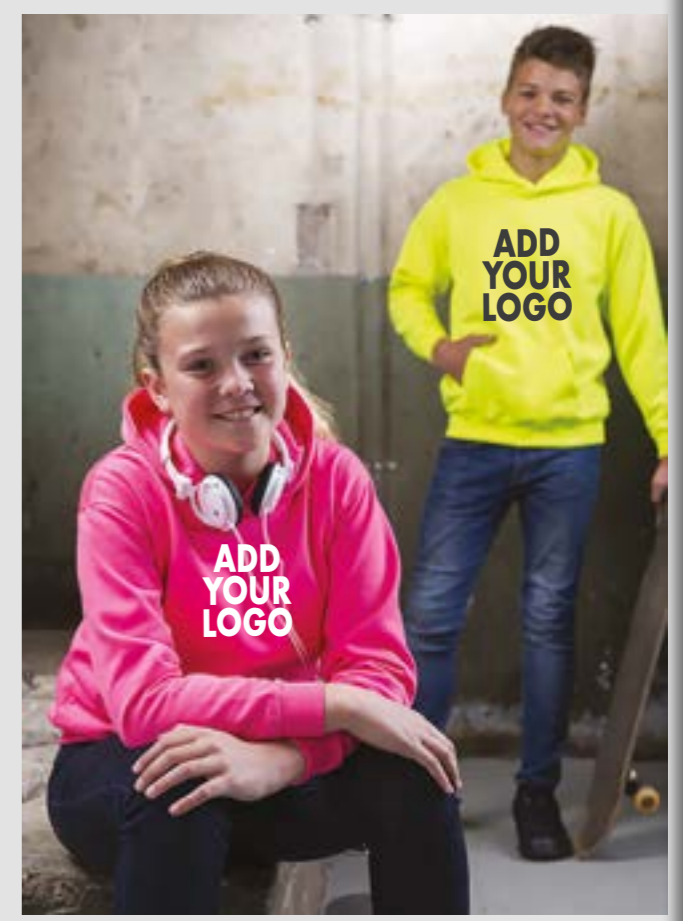
Fabric: Outer: PVC-coated 100% Polyester,
Inner: 100% Polyester Anti-Pill Fleece
Weight: 300 gsm fleece, 4oz PVC-Coated Polyester

| To Fit Age | 3/4 | 5/6 | 7/8 | 9/10 | 11/12 | 13 |
|--------------|-----|-----|-----|------|-------|-----|
| Chest to fit | 24" | 26" | 28" | 30" | 32" | 34" |

| Adults | S | M | L | XL | 2XL |
|--------|---|---|---|----|-----|
|--------|---|---|---|----|-----|



Embroidery & Print Services



CONTACT US NOW for a free consultation



0800 788 0777



sales@ckl.uk.com

CLEARANCE



Reversible Waterproof Jacket



Style no: TFK05 (Kids)
Style no: TFA05 (Adults)

- Warm and super-soft anti-pill polar fleece fabric on the reverse
- Fully taped 100% waterproof seams
- Full length storm-flap and concealed waterproof hood
- Stud-access lining for easy decoration
- 2 zipped and covered outer pockets on both faces
- Reflective safety patches front & back
- Elasticated cuffs



Fabric: PVC-Coated, *Outer:* 100% Polyester,
Inner: 100% Polyester Anti-Pill Fleece

Weight: 300gsm Fleece, 2oz PVC-Coated Polyester

| To Fit Age | 2/3 | 3/4 | 5/6 | 7/8 | 9/10 | 11/12 | 13 |
|--------------|-----|-----|-----|-----|------|-------|-----|
| Chest to fit | 22" | 24" | 26" | 28" | 30" | 32" | 34" |

| Adults | S | M | L | XL | 2XL |
|--------|---|---|---|----|-----|
|--------|---|---|---|----|-----|



Reversible Fleece Jacket



Style no: JFK875

- Showerproof
- High visibility reflective tape on both sides
- Cadet collar with concealed hood
- Storm flap over front zip
- 2 pockets on each side
- Water repellent outer shell
- Elasticated cuffs



Fabric: 100% Polyester / Anti-Pill Fleece on Reverse

Weight: 370 gsm

| To Fit Age | 3/4 | 5/6 | 7/8 | 9/10 | 11/12 |
|--------------|--------|--------|--------|--------|--------|
| Chest to fit | 22/25" | 25/28" | 28/30" | 30/32" | 32/34" |



Value Pack-Away Showerproof Kagoul



Style no: TJAK03 (Kids)
Style no: TJAA03 (Adults)

- Full zip front
- Integrated peaked hood
- Two flap covered pockets
- Drawcord hem
- Reflective patches back and front
- Packaway pouch with hanging loop
- Name label



Fabric: 100% Nylon PU-Coated Waterproof Fabric

Weight: 4oz

| To Fit Age | 3/4 | 5/6 | 7/8 | 9/10 | 11/12 | 13 |
|--------------|-----|-----|-----|------|-------|-----|
| Chest to fit | 24" | 26" | 28" | 30" | 32" | 34" |

| Adults | S | M | L | XL | 2XL |
|--------|---|---|---|----|-----|
|--------|---|---|---|----|-----|



College Jacket



Style no: TJAK01 (Kids)
Style no: TJAA01 (Adults)

- Full length external stormflap on zip front
- 2 covered lower pockets plus 1 internal pocket
- Fully-lined with decoration access
- Breathable mesh-lined torso
- Velcro® fastened concealed hood
- Extended sports back and large reflective tape front and back



Fabric: 100% Nylon PA-Coated Waterproof Fabric

Weight: 4oz

| To Fit Age | 3/4 | 5/6 | 7/8 | 9/10 | 11/12 | 13 |
|--------------|-----|-----|-----|------|-------|-----|
| Chest to fit | 24" | 26" | 28" | 30" | 32" | 34" |

| Adults | S | M | L | XL | 2XL |
|--------|---|---|---|----|-----|
|--------|---|---|---|----|-----|



Kids Stormforce Classic Jacket

Regatta **Style no: TRA454**

- Durable water repellent finish
- Polyester taffeta lining
- Lightweight Thermo-Guard insulation
- Easily compressible
- Inner zip guard
- Stretch binding to hood opening, cuffs and hem
- 2 zipped lower pockets
- Insulated grown on hood
- Reflective trim on back
- Concealed Internal side seam zipped embroidery access



Fabric: Insulation: **100gsm**
Lightweight polyamide fabric

| | | | | | | | |
|-------------------|-------|-------|-------|-------|-------|-------|-------|
| To Fit Age | 3/4 | 5/6 | 7/8 | 9/10 | 11/12 | 32" | 34" |
| Chest to fit (cm) | 53/55 | 55/57 | 59/61 | 63/67 | 69/73 | 75/79 | 79/83 |

Kids Dover Jacket

Regatta **Style no: TRW418**

- With a luxuriously thick, warm and super-soft anti-pill polar fleece fabric on the reverse
- Fully taped 100% waterproof seams
- Full length storm-flap and concealed waterproof hood in collar
- Stud-access lining for easy decoration
- 2 zipped and covered outer pockets on both faces
- Reflective safety patches front & back
- Elasticised cuffs
- Hanging loop & name label



Fabric: Waterproof Hydrafort 5000 Polyester with 220 Series
Anti-Pill Symmetry Fleece Lining

| | | | | | | | | |
|-----------------------------|-----|-----|-----|------|-------|-----|-----|------|
| To Fit Age | 3/4 | 5/6 | 7/8 | 9/10 | 11/12 | 32" | 34" | *36" |
| *size 36" is subject to VAT | | | | | | | | |



Stormbreak Waterproof Jacket

Regatta **Style no: RJAK908 (Kids)**
Style no: RJAA408 (Adults)

- Integral hood
- Elasticated cuffs
- 2 lower pockets
- Reflective trim detail at back hem
- Windproof fabric
- Taped seams



Fabric: Waterproof Hydrafort 5000 Polyester Fabric

| | | | | | | | | |
|-------------------|-------|-------|-------|-------|-------|-------|-------|-------|
| Sizes | 2 | 3/4 | 5/6 | 7/8 | 9/10 | 11/12 | 32" | 34" |
| Chest to fit (cm) | 53/55 | 55/57 | 59/61 | 63/67 | 69/73 | 75/79 | 79/83 | 83/85 |

| | | | | | | |
|--------|---|---|---|----|-----|-----|
| Adults | S | M | L | XL | 2XL | 3XL |
|--------|---|---|---|----|-----|-----|

Stormbreak Waterproof Trousers

Regatta **Style no: RTRK808 (Kids)**
Style no: RTRA308 (Adults)

- Elasticated waist
- 2 side pocket openings
- Press stud adjustment at hem
- Windproof fabric
- Taped seams



Fabric: Waterproof Hydrafort Polyester

| | | | | | | | | |
|-------------------|-------|-------|-------|-------|-------|-------|-------|-------|
| Sizes | 2 | 3/4 | 5/6 | 7/8 | 9/10 | 11/12 | 26" | 28" |
| Waist to fit (cm) | 52/53 | 53/54 | 55/57 | 58/60 | 61/64 | 65/66 | 67/68 | 69/70 |

| | | | | | | |
|--------|---|---|---|----|-----|-----|
| Adults | S | M | L | XL | 2XL | 3XL |
|--------|---|---|---|----|-----|-----|



Kids Classic Rainsuit 2Piece

Regatta **Style no: TRW468**

JACKET

- Concealed hood with adjusters
- Triangular reflective safety badge
- Elasticated cuffs
- Underarm ventilation eyelets
- Adjustable drawcord hem age 7+
- Reflective piping

TROUSERS

- Elasticated waist
- 2 side pocket openings
- Metal snaps at hem
- Jacket and over trouser packs into its own bag with hanger loop for easy storage



Fabric: Waterproof Hydrafort polyester fabric
Taped seams; Windproof Fabric

| Sizes | 2 | 3/4 | 5/6 | 7/8 | 9/10 | 11/12 | 32" | 34" |
|-------------------|-------|--------|---------|---------|---------|---------|---------|---------|
| Chest to fit (cm) | 53/55 | 55/57 | 59/61 | 63/67 | 69/73 | 75/79 | 79/83 | 83-85 |
| Height (cm) | 92/98 | 98/104 | 110/116 | 122/128 | 135/140 | 146/152 | 152/158 | 158/163 |

Kids Paddle Rain Suit

Regatta **Style no: TRW466**

- Waterproof and breathable isolite
- Durable water repellent outer fabric treatment to help water run off
- Windproof fabric
- Taped seams
- Integral hood
- Reflective trim to front and back
- Part-elasticated waist
- Elasticated cuffs and hem
- Superior windproof performance to eliminate windchill



Fabric: Waterproof and Breathable Isolite Lightweight Polyamide

| Kids' months | 6-12 | 12-18 | 18-24 | 24-36 | 36-48 | 48-60 | 60-72 |
|------------------|---------|---------|---------|---------|----------|-----------|-----------|
| EU size (height) | 74-80CM | 80-86CM | 86-92CM | 92-98CM | 98-104CM | 104-110CM | 110-116CM |



323 Splashaway Coverall

BLUE CASTLE **Style no: 323**

- Windproof
- Soft and flexible fabric
- Grown-on hood
- Taped seams



Fabric: Waterproof fabric (to 3000mm)
Breathable (to 2000mvp)

| To Fit Age | 1/2 | 2/3 | 3/4 | 5/6 | 7/8 |
|--------------|-----|-----|-----|-----|-----|
| Chest to fit | 20" | 22" | 24" | 26" | 28" |



Embroidery & Print Services



CONTACT US NOW
for a free consultation



0800 788 0777



sales@ckl.uk.com

Tearaway Junior Coverall

BLUE CASTLE

Style no: **WBSK333**

- Full velcro front fastening
- 2 breast pockets with velcro
- Action back
- Elasticated waist
- Side pockets with access slits



Fabric: **Hardwearing Poly-Cotton**
Weight: **240 gsm**

| Chest to fit | 20" | 22" | 24" | 26" | 28" | 30" | 32" | 34" |
|--------------|-----|-----|-----|-----|-----|------|-------|-------|
| To Fit Age | 1/2 | 2/3 | 3/4 | 5/6 | 7/8 | 9/10 | 11/12 | 13/14 |



Multi-Pocket Combat Waistcoat

D-MAX
PERFORMANCEWEAR

Style no: **WWCK20**

- Zip front
- 2 upper and 2 middle chest pockets with flaps
- 2 lower zip pockets and 4 small flap pockets on top
- Self fabric zip pullers
- Velcro fastening front strap



Fabric: **65% Polyester / 35% Cotton**
Weight: **245 gsm**

| To Fit Age | 5/6 | 7/8 | 9/10 | 11/12 | 13 |
|--------------|-----|-----|------|-------|-----|
| Chest to fit | 26" | 28" | 30" | 32" | 34" |



Multi-Pocket Combat Trousers

D-MAX
PERFORMANCEWEAR

Style no: **WTRK20** (Kids)
Style no: **WTRA20** (Adults)

- Zip front fly
- Button fastened waist band
- Waist adjusting straps and buckles on 2 sides
- Double belt loops
- 2 front side pockets, 2 thigh, 2 back pockets with velcro fastened flaps and fabric pullers, 2 mock back pockets
- Articulated knees
- Double fabric on seat
- Draw cord leg-ends



Fabric: **65% Polyester / 35% Cotton**
Weight: **245 gsm**

| To Fit Age | 5/6 | 7/8 | 9/10 | 11/12 | 13 |
|--------------|-----|-----|------|-------|-----|
| Waist to fit | 23" | 25" | 27" | 29" | 30" |



Hi-Vis Bomber Jacket

Style no: **WJAK398**

- Bomber style
- Fleece lined storm collar
- Quilted lined
- Storm flap with stud fastenings
- 2 reflective bands around the body and 2 braces
- 2 reflective bands on each sleeve
- 2 side pockets at the front, 1 inside pocket

hi-vis yellow

Fabric: 100% Polyester Oxford PU
Weight: 240 gsm

| To Fit Age | 4/6 | 7/9 | 10/12 |
|--------------|--------|--------|--------|
| Chest to fit | 24/26" | 28/30" | 32/34" |



Hi-Vis Vest

Style no: **WWCK01** (Single Banded)
Style no: **WWCK02** (Double Banded)

- One or Two bands and braces
- Velcro front
- High quality reflective tape
- CE certified application requiring high visibility
- Black contrast binding to conceal grime on edges

hi-vis yellow

Fabric: 100% Polyester

| To Fit Age | 2/3 | 4/6 | 7/9 | 10/12 |
|--------------|--------|--------|--------|--------|
| Chest to fit | 20/22" | 24/26" | 28/30" | 32/34" |



Hi-Vis Tabard

Style no: **WWCK10**



- Fully certified to EN1150
- Class 2
- Stud adjustable side tabs
- 5cm hi-vis tex reflective tape

hi-vis yellow

Fabric: 100% Polyester

| To Fit Age | 4/6 | 7/9 | 10/12 |
|--------------|--------|--------|--------|
| Chest to fit | 24/26" | 28/30" | 32/34" |

SPORTSWEAR

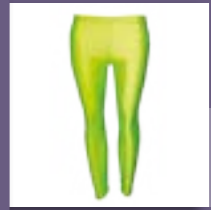
CONTENTS



Sports T-Shirts 93



Shorts 95



Leggings 97



Leotards & Crop Tops 98



Football Kits 100



Track Suits 104



Bibs & Socks 105

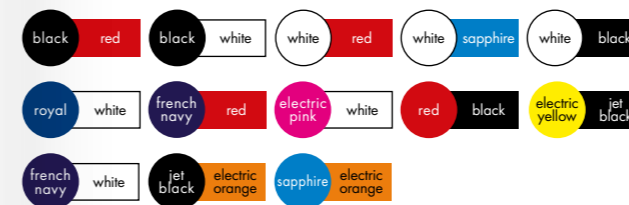


Kids Contrast T-Shirt



Style no: **JC003B** (Kids)
Style no: **JC003M** (Adults)

- Contrast inserts on front and back sleeves
- Crew neck
- Raglan sleeve design
- Lightweight Neoteric textured fabric with inherent wickability
- Self fabric taped back neck
- UPF 30+ UV Protection
- Worldwide Responsible Accredited Production (WRAP) certified production



Fabric: 100% Polyester
Weight: 140 gsm

| To Fit Age | 3/4 | 5/6 | 7/8 | 9/11 | 12/13 |
|------------|-----|-----|-----|------|-------|
| Adults | S | M | L | XL | 2XL |



Kids Performance T-shirt



Style no: **SS074B** (Kids)
Style no: **SS074M** (Mens)
Style no: **SS075M** (Ladies)

- Made from 100% polyester for moisture wicking and quick dry performance
- Sporty raglan sleeves with coverstitch detail to seams
- Printed back neck label for comfort
- Self fabric back neck tape



Fabric: 100% Polyester
Weight: 140 gsm

| To Fit Age | 3/4 | 5/6 | 7/8 | 9/11 | 12/13 | 14/15* |
|------------------------------|-------|-------|-------|-------|-------|--------|
| Height | 104cm | 116cm | 128cm | 140cm | 152cm | 164cm |
| *Age 14/15 is subject to VAT | | | | | | |

| Mens | | S | M | L | XL | 2XL |
|--------|----|---|---|---|----|-----|
| Ladies | XS | S | M | L | XL | 2XL |

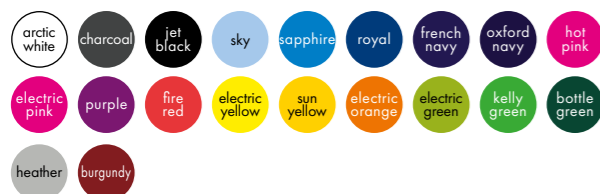


Kids Cool T-shirt



Style no: **JC001B** (Kids)
Style no: **JC001M** (Mens)
Style no: **JC005M** (Ladies)

- Crew neck
- Set in sleeve design
- AWDIs' own Neoteric™ textured fabric with inherent wickability
- Self fabric taped back neck
- Self fabric collar and cuffs
- Printed back neck
- Worldwide Responsible Accredited Production (WRAP) certified Production



Fabric: **100% Polyester**
Weight: **140 gsm**

| To Fit Age | 3/4 | 5/6 | 7/8 | 9/11 | 12/13 |
|------------|-----|-----|-----|------|-------|
|------------|-----|-----|-----|------|-------|

| Mens & Ladies | XS | S | M | L | XL | 2XL |
|---------------|----|---|---|---|----|-----|
|---------------|----|---|---|---|----|-----|



Kids Cool Vest



Style no: **JC007B**
Style no: **JC007M** (Mens)
Style no: **JC015M** (Ladies)

- Sporty fit
- Self-fabric binding around neckline and armholes
- AWDIs' own Neoteric™ textured fabric with inherent wickability
- Curved back hem
- Simple tear off label makes it perfect for rebranding
- Name label
- UPF 30+ UV protection
- Worldwide Responsible Accredited Production (WRAP) certified production



Fabric: **100% Polyester**
Weight: **140 gsm**

| To Fit Age | 3/4 | 5/6 | 7/8 | 9/11 | 12/13 |
|------------|-----|-----|-----|------|-------|
|------------|-----|-----|-----|------|-------|

| Mens | S | M | L | XL | 2XL |
|--------|----|---|---|----|-----|
| Ladies | XS | S | M | L | XL |



Micromesh Football Top



Style no: **TFTK02** (Kids)
Style no: **TFTA02** (Adults)

- Easy care breathable fabric
- Strong double stitched shoulder, armhole and neck seams for durability
- Name tag for team use
- Self fabric v-neck collar
- Suitable for screen or transfer printing or embroidery



Fabric: **100% Polyester Micromesh**

| To Fit Age | 3/4 | 5/6 | 7/8 | 9/10 | 11/12 | 13 |
|------------|-----|-----|-----|------|-------|----|
|------------|-----|-----|-----|------|-------|----|

| Adults | S | M | L | XL | 2XL |
|--------|---|---|---|----|-----|
|--------|---|---|---|----|-----|



Shadow Stripe Football Shorts



Style no: **TFSK01** (Kids)
Style no: **TFSA01** (Adults)

- Basic training shorts
- Elasticated waist
- Self coloured drawstring
- Name tag for team use



Fabric: **100% Easy Care Polyester Shadow Stripe**
Weight: **185 gsm**

| To Fit Age | 3/4 | 5/6 | 7/8 | 9/10 | 11/12 | 13 |
|------------|-----|-----|-----|------|-------|----|
|------------|-----|-----|-----|------|-------|----|

| Adults | S | M | L | XL | 2XL |
|--------|---|---|---|----|-----|
|--------|---|---|---|----|-----|



Micromesh Football Shorts



Style no: **TFSK02** (Kids)
Style no: **TFSA02** (Adults)

- Easy care breathable fabric suitable for screen or transfer printing or embroidery
- Self coloured elasticated waistband and drawcord
- Name tag for team use



Fabric: **100% Polyester Micromesh**

| To Fit Age | 3/4 | 5/6 | 7/8 | 9/10 | 11/12 | 13 |
|------------|-----|-----|-----|------|-------|----|
|------------|-----|-----|-----|------|-------|----|

| Adults | S | M | L | XL | 2XL |
|--------|---|---|---|----|-----|
|--------|---|---|---|----|-----|



Hi-Stretch Shiny Hot Pants



Style no: **DSTG02S** (Girls)
Style no: **DSTL02S** (Ladies)

- Smooth handle silky 4 way stretch fabric
- Elasticated waist
- Pull on style



Fabric: 80% Nylon / 20% Elastane
Weight: 200gsm

| Girls Sizes | XXS | XS | S | M | L | XL | 2XL |
|-------------|------|------|-----|-----|------|-------|-----|
| Girls Years | 2/3* | 3/4* | 5/6 | 7/8 | 9/10 | 11/12 | 13* |

* sizes 2/3, 3/4 and 13 yrs are made to order only)

| Ladies | S | M | L | XL |
|--------|---|---|---|----|
|--------|---|---|---|----|



Stretch Cotton Hot Pants



Style no: **DSTG02C** (Girls)
Style no: **DSTL02C** (Ladies)

- Elasticated waist
- Pull on style
- Rib knit fabric



Fabric: 95% Cotton / 5% Elastane
Weight: 180gsm

| Girls Sizes | XXS | XS | S | M | L | XL | 2XL |
|-------------|------|------|-----|-----|------|-------|-----|
| Girls Years | 2/3* | 3/4* | 5/6 | 7/8 | 9/10 | 11/12 | 13* |

* sizes 2/3, 3/4 and 13 yrs are made to order only)

| Ladies | S | M | L | XL |
|--------|---|---|---|----|
|--------|---|---|---|----|



Hi-Stretch Shiny Leggings



Style no: **DLEG01S** (Girls)
Style no: **DLEL01S** (Ladies)

- Full elastic waist
- Smooth handle silky 4 way stretch fabric
- Comfortable to wear



Fabric: 80% Nylon / 20% Elastane
Weight: 200gsm

| Girls Years | 2/3 | 3/4 | 5/6 | 7/8 | 9/10 | 11/12 | 13 |
|-------------|-----|-----|-----|-----|------|-------|----|
|-------------|-----|-----|-----|-----|------|-------|----|

| Ladies | S | M | L | XL |
|--------|---|---|---|----|
|--------|---|---|---|----|



Stretch Cotton Leggings



Style no: **DLEG01C** (Girls)
Style no: **DLEL01C** (Ladies)

- Full elastic waist
- Stretchy Fit Leggings
- Single Jersey fabric



Fabric: 95% Cotton / 5% Elastane
Weight: 210gsm

| Girls Years | 2/3 | 3/4 | 5/6 | 7/8 | 9/10 | 11/12 | 13 |
|-------------|-----|-----|-----|-----|------|-------|----|
|-------------|-----|-----|-----|-----|------|-------|----|

| Ladies | S | M | L | XL |
|--------|---|---|---|----|
|--------|---|---|---|----|



Hi-Stretch Shiny PE/Dancing Shorts



Style no: **DSTG01S** (Girls)
Style no: **DSTL01S** (Ladies)

- Smooth handle silky 4 way stretch fabric
- Elasticated waist
- Pull on style



Fabric: 80% Nylon / 20% Elastane
Weight: 200gsm

| Girls Sizes | XXS | XS | S | M | L | XL | 2XL |
|-------------|------|------|-----|-----|------|-------|-----|
| Girls Years | 2/3* | 3/4* | 5/6 | 7/8 | 9/10 | 11/12 | 13* |

* sizes 2/3, 3/4 and 13 yrs are made to order only)

| Ladies | S | M | L | XL |
|--------|---|---|---|----|
|--------|---|---|---|----|



Stretch Cotton PE/Dancing Shorts



Style no: **DSTG01C** (Girls)
Style no: **DSTL01C** (Ladies)

- Elasticated waist
- Pull on style
- Rib knit fabric



Fabric: 95% Cotton / 5% Elastane
Weight: 180gsm

| Girls Sizes | XXS | XS | S | M | L | XL | 2XL |
|-------------|------|------|-----|-----|------|-------|-----|
| Girls Years | 2/3* | 3/4* | 5/6 | 7/8 | 9/10 | 11/12 | 13* |

* sizes 2/3, 3/4 and 13 yrs are made to order only)

| Ladies | S | M | L | XL |
|--------|---|---|---|----|
|--------|---|---|---|----|



Girls Hi-Stretch Shiny Sleeveless Leotards

CKL Dancewear
 Style no: **DLTG01S**

- Elasticated neck, armhole and legs
- Smooth handle silky 4 way stretch fabric
- Comfortable to wear



Fabric: 80% Nylon / 20% Elastane
 Weight: 200gsm

| | | | | | | | |
|-------------|-----|-----|-----|-----|------|-------|----|
| Girls years | 2/3 | 3/4 | 5/6 | 7/8 | 9/10 | 11/12 | 13 |
|-------------|-----|-----|-----|-----|------|-------|----|



Girls Hi-Stretch Shiny Long Sleeved Leotards

CKL Dancewear
 Style no: **DLTG02S**

- Self colour binding on neck and the legs
- Smooth handle silky 4 way stretch fabric
- Comfortable to wear



Fabric: 80% Nylon / 20% Elastane
 Weight: 200gsm

| | | | | | | | |
|-------------|-----|-----|-----|-----|------|-------|----|
| Girls years | 2/3 | 3/4 | 5/6 | 7/8 | 9/10 | 11/12 | 13 |
|-------------|-----|-----|-----|-----|------|-------|----|



Hi-Stretch Shiny Crop Top

CKL Dancewear
 Style no: **DTOG01S** (Girls)
 Style no: **DTOL01S** (Ladies)

- Elasticated neck, armhole and hem
- Smooth handle silky 4 way stretch fabric
- Comfortable to wear



Fabric: 80% Nylon / 20% Elastane
 Weight: 200gsm

| | | | | | | | |
|-------------|-----|-----|-----|-----|------|-------|----|
| Girls Years | 2/3 | 3/4 | 5/6 | 7/8 | 9/10 | 11/12 | 13 |
|-------------|-----|-----|-----|-----|------|-------|----|

| | | | | |
|--------|---|---|---|----|
| Ladies | S | M | L | XL |
|--------|---|---|---|----|



Stretch Cotton Crop Top

CKL Dancewear
 Style no: **DTOG02C** (Girls)
 Style no: **DTOL02C** (Ladies)

- Elasticated neck, armhole and hem
- Single Jersey fabric
- Comfortable to wear.
- Double fabric front for sizes 9-13 years



Fabric: 95% Cotton / 5% Elastane
 Weight: 210gsm

| | | | | | | | |
|-------------|-----|-----|-----|-----|------|-------|----|
| Girls Years | 2/3 | 3/4 | 5/6 | 7/8 | 9/10 | 11/12 | 13 |
|-------------|-----|-----|-----|-----|------|-------|----|

| | | | | |
|--------|---|---|---|----|
| Ladies | S | M | L | XL |
|--------|---|---|---|----|

Football Kits



Football Kit



Style no: **TFKK01** (Kids)
Style no: **TFKA01** (Adults)

Top:

- Contoured shoulder and side panels
- Contrast piping & collar insert details
- Micromesh side panels
- Contrast rib knit cuffs
- Name tag

Shorts:

- Elasticated waist and drawcord
- Micromesh side panels
- Name tag



Fabric: 100% Easycare Polyester
Weight: 115 gsm

| To Fit Age | 5/6 | 7/8 | 9/10 | 11/12 | 13 |
|--------------|-----|-----|------|-------|-----|
| Chest to fit | 24" | 26" | 28" | 30" | 32" |

| Adults | S | M | L | XL | 2XL |
|--------|---|---|---|----|-----|
|--------|---|---|---|----|-----|

Goalkeeper's Kit



Goalkeeper's Kit
VENOM SPORT Style no: **TGKK01** (Kids)
 Style no: **TGKA01** (Adults)

Top:

- Generous padding on arms, shoulders & doubled at elbows for superb protection
- Contoured shoulder & side panels
- Contrast piping & collar insert detail
- Contrast rib knit cuffs
- Micromesh side panels
- Name tag

Shorts:

- Generously padded back & sides for superb protection
- Elasticated waist and drawcord
- Name tag

yellow
white
black
black

grey
white
black
black

black
black
black
white

Fabric: 100% Easycare Polyester (Microfibre)
 Weight: 115 gsm

| To Fit Age | 5/6 | 7/8 | 9/10 | 11/12 | 13 |
|--------------|-----|-----|------|-------|-----|
| Chest to fit | 24" | 26" | 28" | 30" | 32" |

| Adults | S | M | L | XL | 2XL |
|--------|---|---|---|----|-----|
| | | | | | |



Goalie Trousers
VENOM SPORT Style no: **TGTK01** (Kids)
 Style no: **TGTA01** (Adults)

- Generously padded knees & hips
- Fully elasticated waist with matching colour draw cord
- Double stitching on front & back rise & side seams
- Elastic stirrups at ankle
- Name tag



Fabric: 100% Easy Care Polyester (Soft Touch)

| To Fit Age | 5/6 | 7/8 | 9/10 | 11/12 | 13 |
|------------|-----|-----|------|-------|-----|
| Waist | 23" | 25" | 27" | 29" | 30" |

| Adults | S | M | L | XL | 2XL |
|--------|---|---|---|----|-----|
| | | | | | |



Track Bottoms
VENOM SPORT Style no: **TTBK01** (Kids)
 Style no: **TBBA01** (Adults)

- High zip ankles for easier wear & removal
- With full length facings behind zips and wide fold-over zip guards for complete safety (protects from injury from metal zip puller during activity)
- 2 side zip pockets
- Ergonomic articulated knees
- Mesh upper and nylon lower leg lining for comfort
- Reflective piping at calf for night visibility
- Plain colour (no contrast panels)
- Name tag label



Fabric: 100% Easycare Polyester (Microfibre)

| To Fit Age | 3/4 | 5/6 | 7/8 | 9/10 | 11/12 | 13 |
|------------|-----|-----|-----|------|-------|----|
| Waist | | | | | | |

| Adults | S | M | L | XL | 2XL |
|--------|---|---|---|----|-----|
| | | | | | |



Contrast Track-Suit Top & Bottoms



Style no: **TTSK02** (Kids)
Style no: **TTSA02** (Adults)

Jacket:

- Mesh fabric lining
- Storm flap wth fold-over zip guard
- Reflective piping all sides
- 2 zip pockets
- Articulated back & elbows
- Name label

Trousers:

- High zip ankles for easier wear & removal
- With full length facings behind zips and wide fold-over zip guards for complete safety (protects from injury from metal zip puller during activity)
- 2 side zip pockets
- Ergonomic articulated knees
- Mesh upper and nylon lower leg lining for comfort
- Reflective piping at calf for night visibility
- Name tag label



Black / Red / Black Red / Black / Black Navy / White / Navy Royal / Navy / Navy

| | | | | | | |
|--------------|-----|-----|-----|------|-------|-----|
| To Fit Age | 3/4 | 5/6 | 7/8 | 9/10 | 11/12 | 13 |
| Chest to fit | 22" | 24" | 26" | 28" | 30" | 32" |
| Adults | S | M | L | XL | 2XL | |

CLEARANCE



Football Socks



Style no: **TSOK01** (Kids)
Style no: **TSOA01** (Adults)

- Heavy rib knit
- Self coloured
- Turn-up top
- Fully fashioned heel and toe



Fabric: 100% Easycare Polyester

| | | | | |
|-------|------------|---------|-----|------|
| Kids' | 12.5 - 3.5 | Adults' | 4-6 | 7-11 |
|-------|------------|---------|-----|------|



Football Bib



Style no: **TFBK01** (Kids)
Style no: **TFBA01** (Adults)

- Mesh fabric black binding
- Quick dry fabric
- Name label



Fabric: 100% Easycare Polyester
Weight: 115 gsm

| | |
|--------|-------------------------------------|
| Kids | ONE SIZE: Suitable for 5 - 8 Years |
| Youths | ONE SIZE: Suitable for 9 - 13 Years |
| Adults | ONE SIZE |

Performance Football Socks

Style no: **PSOK02** (Kids)
Style no: **PSOA02** (Adults)

- Air mesh construction for increased ventilation
- Arch grip support for optimum fit
- Padded sole for increased comfort
- Padded toe for increased protection



Fabric: 93% Polyester / 7% Elastodiene

| | | | | |
|-------|------------|---------|-----|------|
| Kids' | 12.5 - 3.5 | Adults' | 4-6 | 7-11 |
|-------|------------|---------|-----|------|



ACCESSORIES

CONTENTS



Bags 107



Hats 114



Socks 116



Gloves, Belts, Shoes 119



'Stafford' Nylon Drawstring Tote Backpack



Style no: **GBA5890**

- Classic drawstring backpack
- Strong nylon with PU backing
- Reinforced corners with gunmetal eyelets
- Tough cord carrying handle
- Water resistant



Fabric: 210d Nylon with PU Backing
Dimensions: 44 x 34.5 cm
Print area: 32 x 26 cm
Capacity: 13 litres



'Glasgow' Jumbo Kit Holdall



Style no: **GBA1417**

- A spacious kitbag with a large main compartment
- Two front pockets and two end pockets with reflective strips
- An adjustable shoulder strap and reinforced carrying handles with Velcro wrap



Fabric: 420D Nylon with waterproof PVC lining
Dimensions: 32 x 68 x 35cm
Print area: 20 x 35 cm
Capacity: 75 litres



'Stafford' Hi-Viz Nylon Drawstring Backpack



Style no: **GBA5892**

- Reflective strip on front
- Waterproof nylon with PU backing
- Reinforced corners with gunmetal eyelets
- Strong nylon cord



Fabric: 210d Nylon, Reflective Strips
Dimensions: 44 x 34.5 cm
Print area: 15 x 26 cm
Capacity: 13 litres

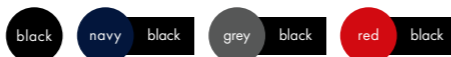


'Daytona' Sports Travel Holdall



Style no: **GBA2510**

- Practical sports holdall with one main compartment with internal baseboard
- One front pocket and two side pockets
- Reinforced webbed carrying handles with polyester/Velcro wrap
- Reinforced webbed adjustable shoulder strap



Fabric: 600D Polyester
Dimensions: 31 x 60 x 27 cm
Print area: 14 x 19 cm
Capacity: 50 litres



'Milan' Backpack



Style no: **GBA7667**

- Large main compartment
- Zipped front pocket
- Adjustable shoulder straps
- Webbed carrying handle



Fabric: 600D Polyester
Dimensions: 41 x 30 x 17 cm
Print area: 14 x 14 cm
Capacity: 20 litres



BagBase Junior Fashion Backpack



Style no: **BG125B**

- Padded adjustable shoulder straps
- Padded back panel
- Zippered front pocket
- Grab handle
- TearAway label for ease of rebranding



Fabric: 600D Polyester
Dimensions: 28 x 38 x 19 cm
Print area: 16 x 10 cm
Capacity: 14 litres



BagBase Original Fashion Backpack

BagBase Style no: **BG125**

- Padded back panel
- Zippered front pocket
- Grab handle
- Padded adjustable shoulder straps
- TearAway label for ease of rebranding



Fabric: 600D Polyester
Dimensions: 31 x 42 x 21 cm
Print area: 20 x 15 cm
Capacity: 18 litres

Junior Shoe Sac

QUADRA Style no: **QD458**

- Water resistant fabric
- Covered name-card holder
- Reflective safety triangle front and back



Fabric: 210D Polyester
Dimensions: 37 x 28 cm
Print area: 20 x 15 cm
Embroidery: Tubular hoop 18 cm max
Capacity: 6 litres

Sandwich Lunchbox Cooler Bag

Shugon Style no: **SH1808**

- Aluminum lining
- Grab handle
- Main compartment zipped
- Good insulation



Fabric: 600D Polyester
Dimensions: 8H x 23W x 23D cm
Print area: 15 x 15 cm
Capacity: 4 litres

'Miami' Backpack

Shugon Style no: **GBA7690**

- Premium backpack with 2 main compartments
- 2 side bottle pockets
- String cords on front
- Main compartment has internal pocket for MP3/ ipod
- Rubber outlet for earphones
- Organiser compartment for pens/phone etc in front compartment
- Webbed carrying handle
- Adjustable padded shoulder straps



Fabric: 600d Ripstop Nylon
Dimensions: 43 x 30 x 22 cm
Print area: 12 x 9 cm
Capacity: 26 litres



Junior Book Bag

Style no: QD51



- Rip-Strip™ closure
- Zippered internal pocket
- Covered name-card holder
- Enhanced visibility reflective strips

Classic Book Bag

Style no: QD456



- Rip-Strip™ closure
- Concealed name-card holder
- Enhanced visibility reflective strips



Fabric: 420D Polyester
 Dimensions: 37 x 30 x 6 cm
 Print area: 30 x 16 cm
 Embroidery: Tubular hoop 18 cm max
 Capacity: 5 litres

Fabric: 600D Polyester
 Dimensions: 37 x 30 cm
 Print area: 30 x 16 cm
 Embroidery: Tubular hoop 18 cm max
 Capacity: 5 litres



Enhanced-Vis Book Bag

Style no: QD452



- Rip-Strip™ closure
- Name-card holder
- Enhanced visibility reflective panel
- Fluorescent binding

Water Bottle And Holder

Style no: QD440



- 500ml BPA free soft water bottle included
- Belt loop and carabiner clip
- Soft pull-up drink nozzle with screw on cap
- Ergonomic easy grip neck
- Wide necked bottle opening for easy filling and cleaning



Fabric: 600D Polyester
 Dimensions: 38 x 28 cm
 Print area: 28 x 16 cm
 Embroidery: Tubular hoop 18 cm max
 Capacity: 4 litres

Outer Fabric: 600D Polyester
 Dimensions: 7.5 x 7.5 x 20 cm
 Print area: 9 x 9 cm
 Capacity: 500 ml



Knitted Wooly Hat



Style no: **GHAK02** (Kids)
Style no: **GHAA02** (Adults)

- Fine gauge tight knit fabric with turnup



* Grey is available in kids size only

Fabric: 100% Acrylic
Size: One Size Kids
One Size Adults

Rolled Down Beanie Hat



Style no: **GHAK06** (Kids)
Style no: **GHAA06** (Adults)

- Fine gauge tight knit fabric



* Kids Sizes available in Black only

Fabric: 100% Acrylic
Size: One Size Kids
One Size Adults



Kids Baseball Cap



Style no: **GHAK01** (Kids)
Style no: **GHAA01** (Adults)

- Structured five panel
- Low profile
- Pre-curved peak
- Fabric covered short touch strap



Fabric: 100% Cotton
Size: One Size Kids
One Size Adults

Junior Legionnaire Style Cap



Style no: **BB11B**

- Pre-curved peak
- Seamless, centralised front panel
- Child safe secure button
- Fold-up ear and neck protection
- Elasticated size adjuster



Fabric: 100% Cotton Twill
Size: 30



Kids 3-Pack Short Socks

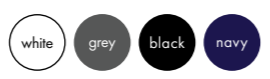


- Soft handle
• Cotton rich with elastane for comfort fit
• Fashioned heel and toe
• Elasticated double welt at calf
• Added elastane for stretch

Kids 3-Pack Knee High Socks



- Soft handle
• Cotton rich with elastane for comfort fit
• Fashioned heel and toe
• Elasticated double welt at calf
• Added elastane for stretch



Fabric: 78% Cotton / 20% Polyester / 2% Elastane
Sizes: 6-5 | 9-12 | 12.5-3.5 | 4-6

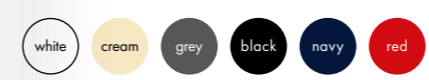
Fabric: 78% Cotton / 20% Polyester / 2% Elastane
Sizes: 9-12 | 12.5-3.5 | 4-5



Girls Tights



- Proper heel tights
• Cotton mix for better breathability and comfort
• Added elastane for stretch



Fabric: 75% Cotton / 20% Polyester / 5% Elastane
Girls Years: 2/3 | 3/4 | 5/6 | 7/8 | 9/10



3-Pack Lace TOT Socks



- 3 Pair Packs Girls Cotton Rich Plain Turnover Top
• Broderie Anglaise Lace
• Soft, warm, comfortable and breathable due to high Cotton content
• Added elastane for stretch



Fabric: 78% Cotton / 20% Polyester / 2% Elastane
Sizes: 6-8.5 | 9-12 | 12.5-3.5 | 4-5.5



Girls 3-Pack Plain TOT Socks



Style no: **CSOG03**

- 3 Pair Packs Girls Cotton Rich Plain Turnover Top
- Soft, warm, comfortable and breathable due to high Cotton content
- Added elastane for stretch



Fabric: 78% Cotton / 20% Polyester / 2% Elastane

Sizes: 6-8.5 | 9-12 | 12.5-3.5



Magic Gloves



Style no: **WGLK05** (Kids)
Style no: **WGLA05** (Mens)
Style no: **WGLL05** (Ladies)

- Stretch to fit most kids sizes
- Knitted ribbed cuffs



Fabric: 95% Acrylic / 5% Spandex

Size: One Size Kids
One Size Mens
One Size Ladies



Plimssoles

Style no: **CFOK4306**



- Velcro fastened front
- Canvas upper
- Crepe coloured rubber sole
- Poly-bagged



| | | | | | | | | |
|-----------------|---|---|---|---|----|----|----|----|
| Kids Shoe Sizes | 6 | 7 | 8 | 9 | 10 | 11 | 12 | 13 |
| Youth | 1 | 2 | 3 | 4 | 5 | | | |

Wellingtons

Style no: **CFOK028**



- Cleated sole
- Wash/wipe textile linings



Fabric: Easy-Clean PVC



| | | | | |
|------------|----|----|----|----|
| Kids Sizes | 10 | 11 | 12 | 13 |
| Youth | 1 | 2 | 3 | 4 |



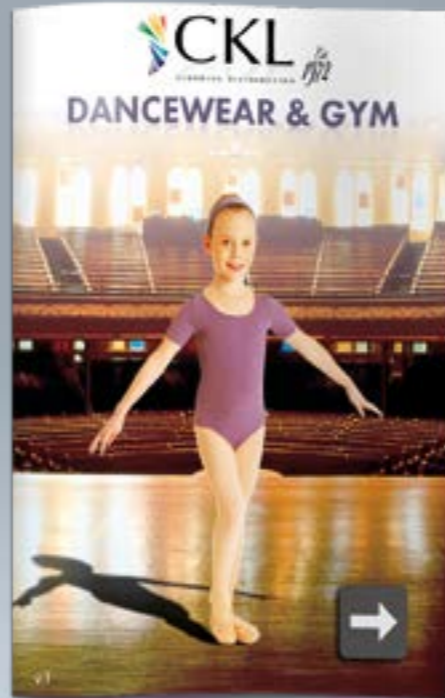
Snake Belt



Style no: **GBEK01**

- Stretch to fit
- One size
- Assorted packs of 12 in plain colours, stripes or novelty prints

Fabric: 100% Polyester



Check our website
WWW.CKL.UK.COM

- Tops
- Leotards
- Shorts
- Leggings
- Skirts
- Vests & T-Shirts
- Bags
- Hoodies
- Onesies
- Jog Pants
- Jackets
- Caps
- Headbands
- Bespoke

To watch you dance
Is to hear your heart speak

EXTENSIVE RANGE AT AFFORDABLE PRICES

CKL BESPOKE MANUFACTURE

Need a special colour, fabric, or even a whole new design?
We can make it for you.

STEP 1. CHOOSE YOUR DESIGN

Tell us what you need. It can be a tweak to any of our stock designs of tops, shorts, leotards etc, or it could be a whole new design.



DLTG02S



DLTG01S



DLEG01S



DTOG01S



DSTG02S



DSTG01S



CHBG01



CSCG01S

STEP 2. CHOOSE YOUR COLOUR

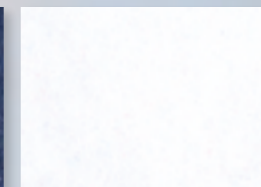
Over 25 colours from stock with 100's more with special order



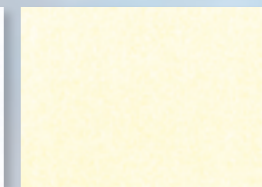
Black



Navy Blue



White



Ivory



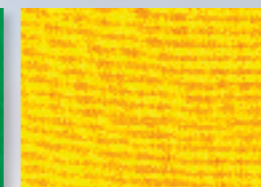
Red



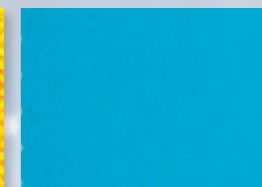
Royal Blue



Emerald



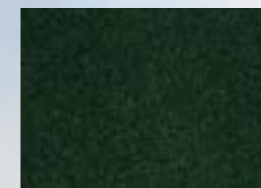
Gold



Light Turq



Purple



Bottle



Wine



Fluorescent Pink



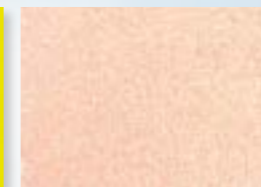
Fluorescent Orange



Fluorescent Green



Fluorescent Yellow



Light Pink



Light Blue



Lilac



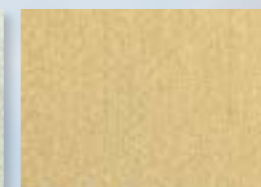
Magenta



Kingfisher



Silver



Mettalic Gold



Mid Blue



Brown

Printready



We can also **Print** your logo or message using a variety of inks, (eg neons, metallics, luminous) or with foils, glitters.



Your new favourite Dancewear supplier!

EMBROIDERED



OR PRINTED



WITH YOUR LOGO

Our In-House **embroidery & printing** team can personalise garments to suit your needs, ensuring the upmost quality from start to finish

INFORMATION

SIZE GUIDE



SENIOR BOYS TROUSERS

| | | | | | | | |
|------------|-------|-----|---------|-----|-----|------|-----|
| Waist | 24" | 25" | 26" | 27" | 28" | 29" | 30" |
| Inside leg | 24" | 25" | 26" | 27" | 28" | 29" | 30" |
| MENS sizes | short | | regular | | | long | |
| Inside leg | 29" | | 31" | | | 33" | |



SWEATSHIRTS • POLO SHIRTS • T-SHIRTS • SHIRTS • KNITWEAR

| | | | | | | | | | | | | | | |
|-------------------|-----|-----|-----|------|-----|------|-------|-------------|----|------|----|------|----|------|
| Age | 1-2 | 2-3 | 3-4 | 5-6 | 7-8 | 9-10 | 11-12 | 13-14 | 15 | 16 | | | | |
| Chest size (in) | 20 | 22 | 24 | 26 | 28 | 30 | 32 | 34 | 36 | 38 | 40 | 42 | 44 | 46 |
| Height (cm) | 90 | 96 | 104 | 116 | 128 | 140 | 152 | 164 | | | | | | |
| Russell sizes | XS | | S | M | L | XL | XXL | XS (Adults) | | | | | | |
| Shirt collar (in) | | | 11 | 11.5 | 12 | 12.5 | 13 | 13.5 | 14 | 14.5 | 15 | 15.5 | 16 | 16.5 |



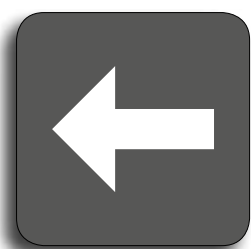
GIRLS SKIRTS & TROUSERS

| | | | | | | | | | | | |
|--------------|-----|-----|-----|-----|-----|-----|------|-------|-------|-----|-------|
| Age | 3/4 | 4/5 | 5/6 | 6/7 | 7/8 | 8/9 | 9/10 | 10/11 | 11/12 | 13 | 15/16 |
| Waist | 18" | 20" | 22" | 23" | 24" | 25" | 26" | 27" | 28" | 29" | 30" |
| Ladies sizes | | | | | | | | | | | |
| Size | 6 | 8 | 10 | 12 | 14 | 16 | 18 | | | | |
| Waist | 24" | 26" | 28" | 30" | 32" | 34" | 36" | | | | |



JUNIOR BOYS TROUSERS 1/2 ELASTIC WAIST

| | | | | | | | | | |
|-------------|-----|-----|-----|-----|-----|------|-------|-------|-------|
| Age | 4-5 | 5-6 | 6-7 | 7-8 | 8-9 | 9-10 | 10-11 | 11-12 | 12-13 |
| Waist | 22 | 23 | 24 | 25 | 26 | 27 | 28 | 29 | 30 |
| Outside leg | 24 | 26 | 28 | 30 | 32 | 34 | 36 | 38 | 40 |
| Inside leg | 15 | 17 | 19 | 21 | 23 | 25 | 26 | 28 | 29 |



CLOTHING MANUFACTURE & DISTRIBUTION

+44 (0)800 788 0777
sales@ckl.uk.com

www.ckl.uk.com
53 Wallace St. Glasgow G5 8DJ